



**TRAFFIC, SIGNALIZATION AND  
ROAD SAFETY PRODUCTS CATALOGUE**

[www.pgepakistan.com](http://www.pgepakistan.com)



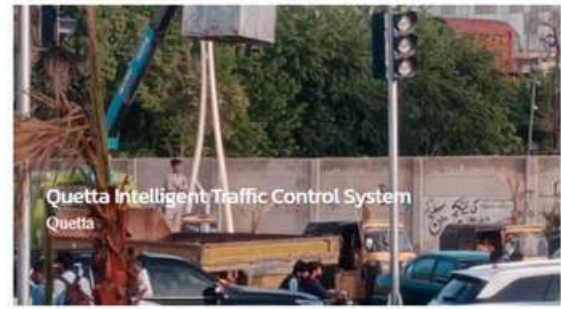
# Smart Traffic Intersections



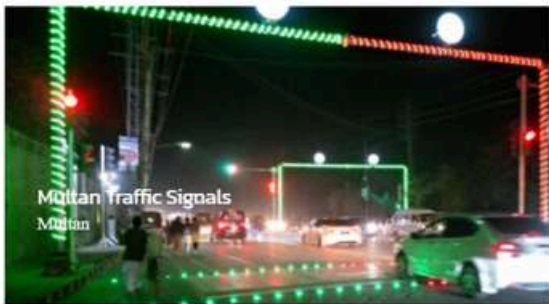
## PROJECTS



Sahiwal Complete traffic intersection with pelican solutions



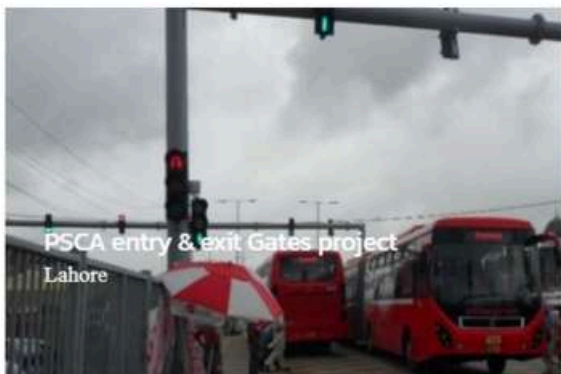
Quetta Intelligent Traffic Signal Project



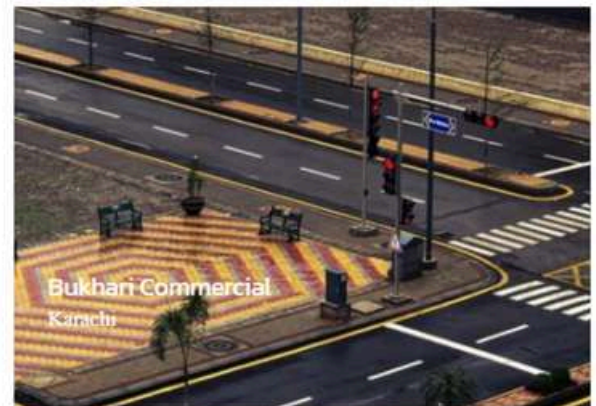
Multan traffic signals sytem



WVD Based ITS Sytem in Bahria town karachi



PSCA Entry & exit gates project



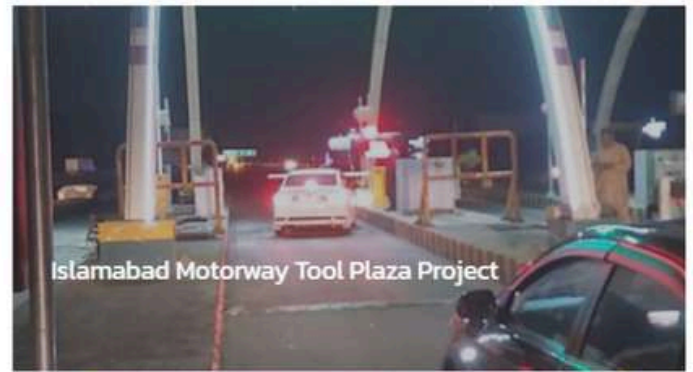
Bukhari Commercial Pelican traffic solution sytem



PSD Metro project



Gaddafi Stadium Lahore Project



Islamabad Motorway Toll Plaza Project



Multan Metro Bus PSD Project



Peshawar BRT Access Control system



Its VMS Screen project

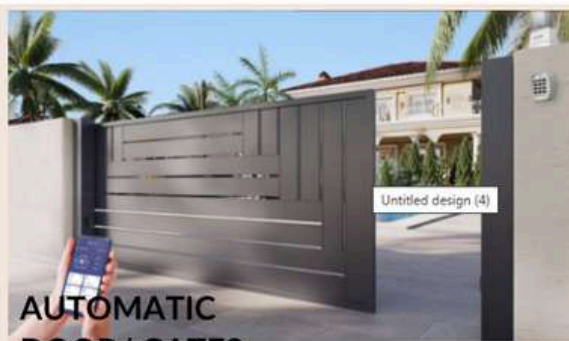
For see more project of Pak German Engineers visit website

[www.pgepakistan.com](http://www.pgepakistan.com)

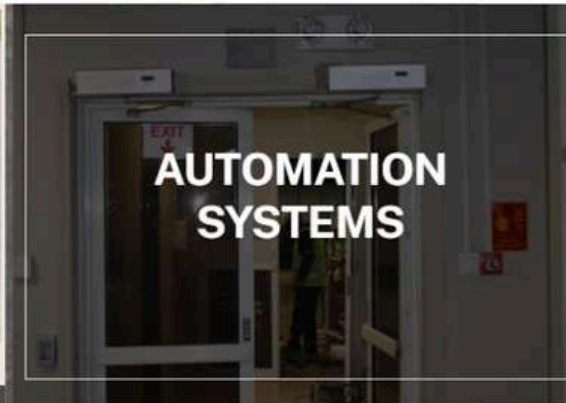
## APPLICATION PHOTOS



EV  
CHARGER



AUTOMATIC  
DOOR/ GATES



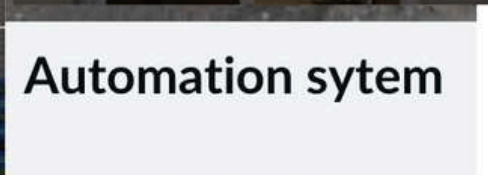
AUTOMATION  
SYSTEMS



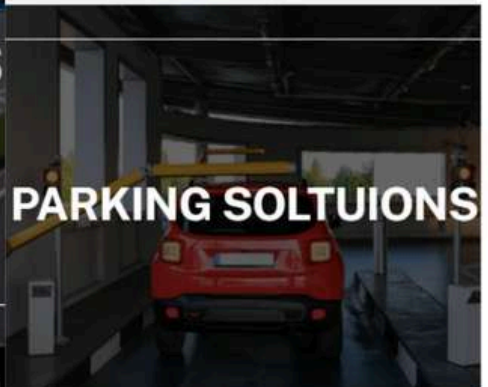
SECURITY SYSTEMS



TRAFFIC SOLUTIONS



Automation system



PARKING SOLUTIONS



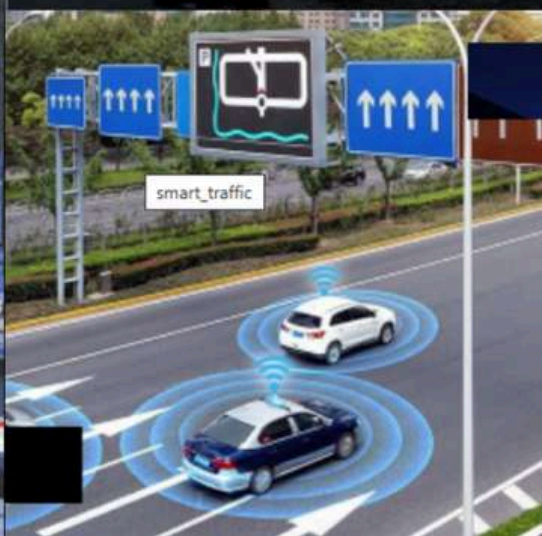
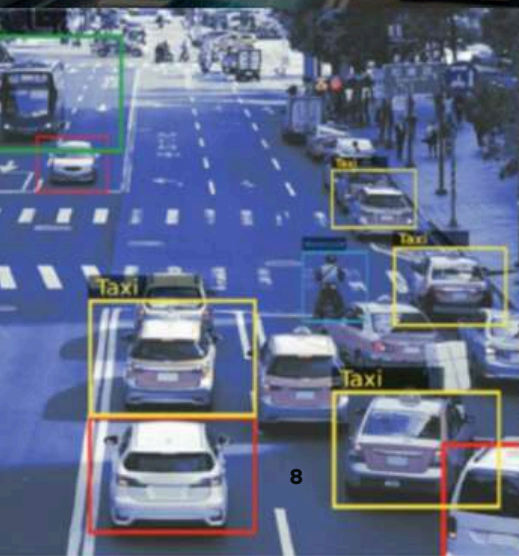
OVER HEIGHT &  
WEIGHT SENSING



ROAD SAFETY



TRAFFIC CONTROL  
SYSTEMS



# SIGNALLING SYSTEMS

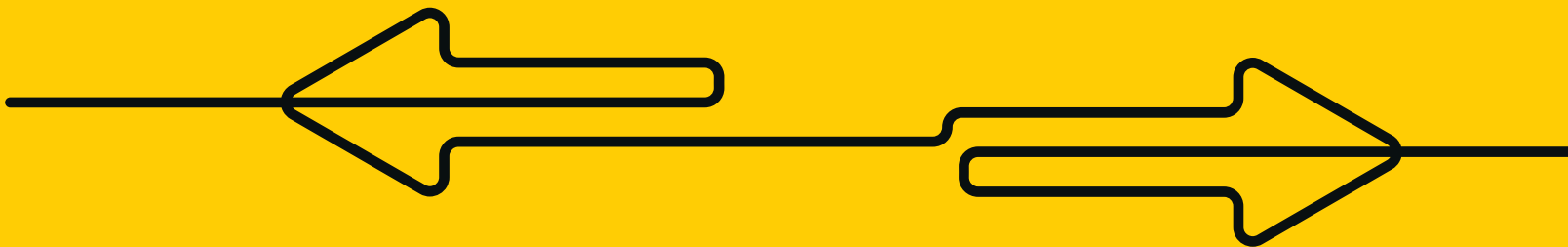
---

PGE products are manufactured according to the traffic and road safety standards.

Power LED Signal Heads: TS EN 12368 certificated Power LED modules with IP 65 **protection level. All housing materials are made of %100 UV PC.**

Controllers: TS EN 50556 certificated, modular structure, green wave system adaptable, **central software supported, programmable via computer, microprocessor based CPU.**  
**Audible Pedestrian Signal: Audible signal for blinds, RILSA standards, warning signal voice level is arranged automatically according to the environment.**

**Infrastructure Equipments: Galvanized Signalling Poles with Highways and Municipality standards, corrosion resistant.**





PAK GERMAN  
ENGINEERS

# PGE POWER LED SIGNAL HEADS

Diameter	200 mm / 300 mm
Housing / Mask Material Type	Polycarbonate (%100 PC)
Housing Color	Black / Grey-Black
LED	Power LED / Red, Yellow, Green
Light Distribution	Fresnel Lens
Power Factor	PF>0.9, THD<%20
Phantom Class	5
Power Consumption	8 Watt / Module
Certificate	TS EN 12368:2015

## Product Types and Codes

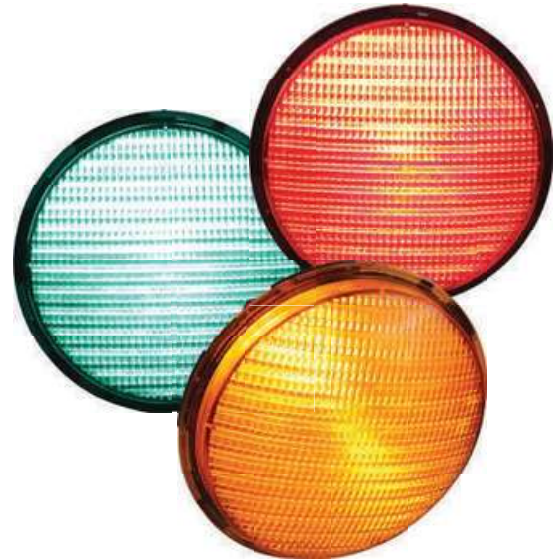
PGE-04-02-200	200 mm Vehicle Signal with PGE Power LEDs (Black / Sintra Housing)
PGE-01-02-200	200 mm Vehicle Signal with PGE Power LEDs (Black / Standard Housing)
PGE-04-02-200	300 mm Vehicle Signal with PGE Power LEDs (Black / PGE Housing)
PGE-01-02-200	300 mm Vehicle Signal with PGE Power LEDs (Black / Standard Housing)
PGE-04-02-200	200 mm Single Signal with PGE Power LEDs (Black / PGE Housing)
PGE-01-02-200	200 mm Single Signal with Sintra Power LEDs (Black / Standard Housing)
PGE-04-02-200	300 mm Single Signal with PGE Power LEDs (Black / PGE Housing)
PGE-01-02-200	300 mm Single Signal with PGE Power LEDs (Black / Standard Housing)
PGE-04-02-200	200 mm Vehicle Signal with Arrow (Black / PGE Housing)
PGE-01-02-200	200 mm Vehicle Signal with Arrow (Black / Standart Housing)
PGE-04-02-200	300 mm Vehicle Signal with Arrow PGE Power LEDs (Black / PGE Housing)
PGE-01-02-200	300 mm Vehicle Signal with Arrow PGE Power LEDs (Black / Standard Housing)
PGE-04-02-200	200 mm Pedestrian Signal with PGE Power LEDs (Black / PGE Housing)
PGE-01-02-200	200 mm Pedestrian Signal with PGE Power LEDs (Black / Standard Housing)



# 200 mm PGE POWER LED TRAFFIC SIGNAL MODULE

**PG-01-041**

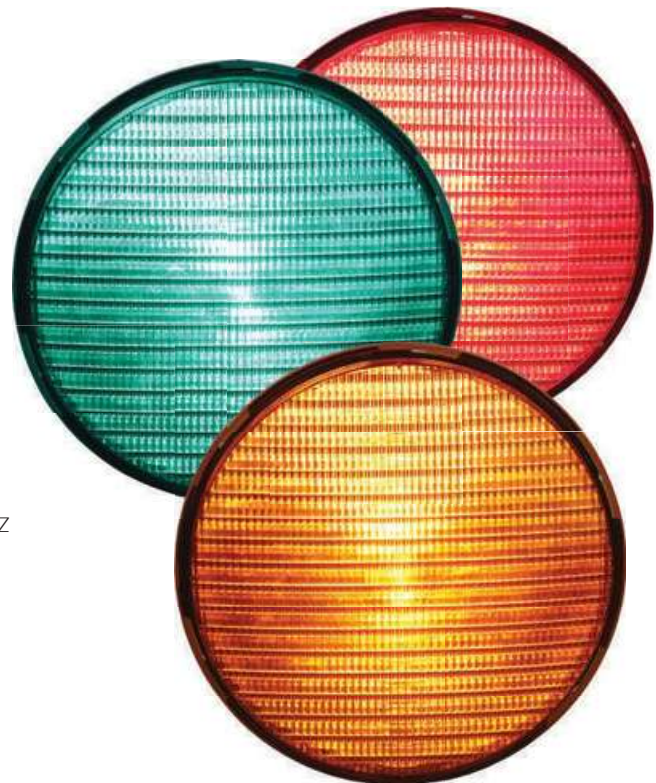
Diameter	200 mm
Front Shell	Tinted, Clear
Color	Red, Yellow, Green
Light Intensity	400 - 800 cd
Light Source	Power LED
Power Consumption	8W
Operating Voltage	220-240 V AC 50/60 Hz
Phantom Class	5
Power Factor	>%90
Total Harmonic Distortion (THD)	<%20
IP Class	IP 65
Weight	0,7 kg
Certificates	TS EN 12368:2015
Operating Temperature	-40°/+60°C



# 300 mm PGE POWER LED TRAFFIC SIGNAL MODULE

**PG-01-046**

Diameter	300 mm
Front Shell	Tinted, Clear
Color	Red, Yellow, Green
Light Intensity	400 - 800 cd
Light Source	Power LED
Power Consumption	8W
Operating Voltage	220-240 V AC 50/60 Hz
Phantom Class	5
Power Factor	>%90
Total Harmonic Distortion (THD)	<%20
IP Class	IP 65
Weight	1,1 kg
Certificates	TS EN 12368:2015
Operating Temperature	-40°/+60°C



## DIMMABLE PGE POWER LED SIGNAL HEADS



### Product Types and Codes

<b>PG-04-02-200GD</b>	200 mm Vehicle Dimmable PGE Power LED Gray Glass
<b>PG-04-02-250GD</b>	200 mm Vehicle Dimmable PGE Power LED Gray Glass
<b>PG-04-02-300GD</b>	300 mm Vehicle Dimmable PGE Power LED Gray Glass

<b>Diameter (LED module)</b>	300 mm
<b>Housing / Mask Material Type</b>	Polycarbonate (% 100 PC)
<b>Housing Color</b>	Black
<b>LED (Type / Color)</b>	Power LED / Red, Yellow, Green
<b>Lens Type</b>	Gray
<b>Light Distribution</b>	Fresnel Lens
<b>Power Factor</b>	PF>0.9, THD<20%
<b>Phantom Class</b>	5
<b>Dim Class</b>	D1 (Dimmable)
<b>Power Consumption</b>	Max 8 Watts / Module
<b>Certificates</b>	TS EN 12368:2015, IP 65

## 100mm POWER LED SIGNAL HEADS

Diameter	100 mm
Housing /Mask Material Type	Polycarbonate (% 100 PC)
Housing Color	Black / Grey-Black
LED	Power LED / Red, Yellow, Green
Power Consumption	5 Watt / Module

### Product Types and Codes

**PG-04-01-100** 100 mm Vehicle Signal with Power LEDs (Black / PGE Housing)

**PG-04-01-101** 100 mm Power LED Signal with Triple Bicycle (Black / PGE Housing)

**PG-04-01-150** 100 mm Pedestrian Signal with Power LEDs (Black-PGE Housing)

**PG-04-01-152** 100 mm Power LED Signal with Double Bicycle (Black /PGE Housing)

**PG-04-01-122** 100 mm Single Signal with Yellow Power LEDs (Black / PGE Housing)

**PG-04-01-151** 100 mm Double Signal with Power LEDs (Black-PGE Housing)



## 100mm LED SIGNAL HEADS

Diameter	100 mm
Housing /Mask Material Type	Polycarbonate (% 100 PC)
Housing Color	Black / Grey-Black
LED	5 mm LED
Power Consumption	2 Watt / Module

### Product Types and Codes

**PG-04-40-100** 100 mm Vehicle Signal with LEDS (Black-PGE Housing)

**PG-04-40-150** 100 mm Pedestrian Signal with LEDS (Black-PGE Housing)

**PG-04-40-155** 100 mm Double Signal with LEDS (Black-PGE Housing)

**PG-04-40-180** 100 mm Single Signal with LEDS (Black-PGE Housing)



## 5mm LEDs SIGNAL HEADS

Diameter	200 mm / 300 mm
Housing /Mask Material Type	Polycarbonate (% 100 PC)
Housing Color	Black / Grey-Black
LED	5 mm Transparent / Red, Yellow, Green
Power Consumption	12 Watt - 18 Watt / Module
Certificate (IP Class)	TS EN 12368:2015

### Product Types and Codes

**PG-01-40-200** 200 mm Vehicle Signal with 5 mm LEDs (Black / Standard Housing)  
**PG-04-40-200** 200 mm Vehicle Signal with 5 mm LEDs (Black / PGE Housing) **PG-01-40-250** 200 mm Pedestrian Signal with 5 mm LEDs (Black / Standard Housing)  
**PG-04-40-250** 200 mm Pedestrian Signal with 5 mm LEDs (Black / PGE Housing)  
**PG-01-40-275** 200 mm Single Signal with 5 mm LEDs (Black / Standard Housing)  
**PG-04-40-275** 200 mm Single Signal with 5 mm LEDs (Black / PGE Housing)  
**PG-01-40-300** 300 mm Vehicle Signal with 5 mm LEDs (Black / Standard Housing)  
**PG-04-40-300** 300 mm Vehicle Signal with 5 mm LEDs (Black / PGE Housing)  
**PG-01-40-350** 300 mm Single Signal with 5 mm LEDs (Black / Standard Housing)  
**PG-04-40-350** 300 mm Single Signal with 5 mm LEDs (Black / PGE Housing)  
**PG-01-40-290** 200 mm Vehicle Signal with Arrow 5 mm LEDs (Black / Standard Housing)  
**PG-04-40-201** 200 mm Vehicle Signal with Arrow 5 mm LEDs (Black / PGE Housing)  
**PG-01-40-380** 300 mm Vehicle Signal with Arrow 5 mm LEDs (Black / Standard Housing)  
**PG-04-40-301** 300 mm Vehicle Signal with Arrow 5 mm LEDs (Black / PGE Housing)



# PGE POWER LED SIGNAL HEADS

Diameter	200 mm /300 mm
Housing /Mask Material Type	Polycarbonate (% 100 PC)
Housing Color	Black / Grey-Black
LED	Power LED / Red, Yellow, Green
Phantom Class	3
Power Consumption	7 Watt / Module
Certificate	TS EN 12368: 2015

## Product Types and Codes

**PG-01-01-200** 200 mm Vehicle Signal with Power LEDs (Black / Standard Housing)

**PG-04-01-200** 200 mm Vehicle Signal with Power LEDs (Black / Sintra Housing)

**PG-01-01-250** 200 mm Pedestrian Signal with Power LEDs (Black / Standard Housing)

**PG-04-01-250** 200 mm Pedestrian Signal with Power LEDs (Black / Sintra Housing)

**PG-01-01-275** 200 mm Single Signal with Power LEDs (Black / Standard Housing)

**PG-04-01-275** 200 mm Single Signal with Power LEDs (Black / Sintra Housing)

**PG-01-01-300** 300 mm Vehicle Signal with Power LEDs (Black / Standard Housing)

**PG-04-01-300** 300 mm Vehicle Signal with Power LEDs (Black / Sintra Housing)

**PG-01-01-350** 300mm Single Signal with Power LEDs (Black / Standard Housing)

**PG-04-01-350** 300 mm Single Signal with Power LEDs (Black / Sintra Housing)

**PG-01-01-290** 200 mm Vehicle Signal with Arrow Figure (Black / Standard Housing)

**PG-04-01-201** 200 mm Vehicle Signal with Arrow Figure (Black / Sintra Housing)

**PG-01-01-380** 300 mm Vehicle Signal with Arrow Figure (Black / Standard Housing)

**PG-04-01-301** 300 mm Vehicle Signal with Arrow Figure (Black / Sintra Housing)

**PG-01-01-251** 200 mm Double Signal with Power LEDs Red\Green (Black / Standard Housing)

**PG-04-01-255** 200 mm Double Signal Head with Power LEDs Red\Green (Black / Standard Housing)





## 200mm PGE POWER LED PEDESTRIAN SIGNAL HEAD with PROJECTOR (BLACK / SINTRA HOUSING)

**PG-04-02-290**

Projector	Luminous	Color	Power	Consumption		
Diameter (LED module)	Mask	Housing Color / Type				
		Red, Green				
		Max 23 Watt				
		(8W Signal Head, 15W Projector)				
		200 mm				
		Pedestrian				
		Black / Sintra				
Housing / Mask Material	Type	Polycarbonate (% 100 PC)				
LED Type / Color	Sintra Power LED / Red, Green					
Light Distribution (Module)	Fresnel Lens					
Power Factor	PF>0.9, THD<% 20					
Phantom Class	5					
Protection Class	IP 65					



## 200 mm DOUBLE SIGNAL HEAD with POWERLEDS

**PG-01-05-501**

Diameter (LED module)	200 mm
Housing / Mask Material	Polycarbonate (% 100 PC)
Housing Color	Black
LED (Type / Color)	Power LED, Red / Green
Power Consumption	Max 7 Watt / Module
Input Voltage	220 V AC 50 Hz
Certificates	TS EN 12368:2015



## 300 mm GRAPHIC COUNTDOWN VEHICLE SIGNAL (BLACK / STANDARD)

**PG-01-06-301**

Diameter (LED Module) Housing Color / Type

300 mm  
Black / Standard

Housing / Mask Material Type Polycarbonate (% 100 PC)

LED (Type / Color)

5 mm LED / Red, Yellow, Green  
(TS EN 12368) 15W / Module

Certificate

Power Consumption

220 V AC 50 Hz Full Graphic IP  
65

Input Voltage

LED Signal Type

LED Module Protection



## 300 mm VEHICLE SIGNAL WITH RED AND GREEN COUNTDOWN (BLACK / STANDARD)

**PG-01-06-300**

Diameter (LED Module)

300 mm

Housing Color / Type

Black / Standard

Housing / Mask Material Type Polycarbonate (% 100 PC)

LED (Type / Color)

5 mm LED / Red, Yellow, Green

Power Consumption

15W / Module

Input Voltage

220 V AC 50 Hz

LED Module Protection

IP 65



## 300 mm VEHICLE SIGNAL WITH YELLOW COUNTDOWN MODULE (BLACK / STANDARD)

**PG-01-60-300**

Diameter (LED Module)

300 mm Black / Standard

Housing Color / Type

Polycarbonate (% 100 PC) 5 mm

Housing / Mask Material Type

LED / Red, Yellow, Green (TS EN

LED (Type / Color)

12368) 15W / Module 220 V

Certificate

AC 50 Hz IP 65

Power Consumption

Input Voltage

LED Module Protection

## ANIMATED PEDESTRIAN SIGNAL WITH COUNT DOWN (GREEN ALUMINIUM BODY)

**PG-05-40-300**

Size	370 x 670 x 70 mm
Weight	9kg
Housing Color	Green
Housing Material Type	Aluminum
LED	5mm Red, Green
Power Consumption	Graphics Count Down
Product Type	Animated Pedestrian Set Max 30 Watt



## 300 mm STAINLESS HOUSING LED VEHICLE SIGNAL

**PG-05-40-300**

Diameter	300 mm
Housing Material Type	Mirrored Stainless
Housing Color	Housing
LED	Silver
Power Consumption	5 mm Transparent
Weight	Red , Yellow , Green
Size	Max 18 Watt 21 kg 112 cm x 37 cm x 45 cm



# LED TRAFFIC COUNTDOWN TIMER

Diameter	200 mm / 300 mm
Housing /Mask Material Type	Polycarbonate (% 100 PC)
Housing Color	Black / Grey-Black
LED	5 mm Transparent / Red, Yellow, Green
Power Consumption	10 Watt - 15 Watt / Module
Certificate (IP Class)	TS EN 12368:2015



## Product Types and Codes

**PG 01-05-200** 200 mm Traffic Countdown Timer with LEDs  
(Black / Standard Housing)

**PG-04-05-200** 200 mm Traffic Countdown Timer with LEDs  
(Black / Standard Housing)

**PG-01-05-250** 200 mm Animated Pedestrian Signal with LEDs (Black / Standard Housing)

**PG04-05-250** 200 mm Animated Pedestrian Signal with LEDs (Black / PGE Housing)

**PG-01-05-300** 300 mm Traffic Countdown Timer with LEDs (Black / Standard Housing)

**PG-04-05-300** 300 mm Traffic Countdown Timer with LEDs (Black / PGE Housing)

**PG 01-05-320** 300 mm Countdown Timer with 2.5 Digits LEDs (Black / Standard Housing)

**PG 04-05-320** 300 mm Countdown Timer with 2.5 Digits LEDs (Black / PGE Housing)

**PG 01-05-325** 300 mm Graphic Countdown Timer with LEDs (Black / Standard Housing)

**PG 04-05-325** 300 mm Graphic Countdown Timer with LEDs (Black / PGE Housing)

**PG-01-05-350** 300 mm Animated Pedestrian Signal with LEDs (Black / Standard Housing)

**PG 04-05-350** 300 mm Animated Pedestrian Signal with LEDs (Black /PGE Housing)

**PG 01-40-260** 200 mm Static Pedestrian Signal with LEDs (Black / Standard Housing)

**PG 04-40-260** 200 mm Static Pedestrian Signal with LEDs (Black / PGE Housing)

**PG 01-05-400** 300 mm Adaptive Countdown Timer For Dynamic Intersections (Black / Standard Housing)

**PG 04-05-400** 300 mm Adaptive Countdown Timer For Dynamic Intersections (Black / PGE Housing)



## 200 mm STOP / WALK SIGNAL WITH LEDS (BLACK / STANDARD)

**PG-01-45-200**

Diameter Housing  
Material Type Housing  
Color LED (Type / Color)  
Power Consumption  
Certificates Operating  
Voltage

200 mm  
Polycarbonate (% 100 PC)  
Black / Grey Black  
9 mm / Red, Green  
7 W / Module  
IP 65  
12 V DC / 24 V DC / 220 V AC



## 200 mm ANIMATED PEDESTRIAN SIGNAL WITH COUNTDOWN TIMER WITH LEDS

**PG-01-05-275**

Diameter Weight Housing /  
Mask Material Type Housing  
Color Input Voltage LED Power  
Consumption

200 mm  
6 kg  
Polycarbonate (%100 PC)  
Black / Grey-Black  
220 V AC 50 Hz  
5mm, Red, Green  
30 Watt



## 300 mm ANIMATED PEDESTRIAN SIGNAL WITH COUNTDOWN TIMER WITH LEDS

**PG-01-05-375**

Diameter  
Weight  
Housing / Mask Material Type  
Housing Color  
Input Voltage  
LED  
Power Consumption

300 mm  
9 kg  
Polycarbonate (%100 PC)  
Black / Grey-Black  
220 V AC 50 Hz  
5mm, Red, Green  
30 Watt



## 200 MM DOUBLE SIGNAL HEAD WITH POWERLEDS **PG-01-02-255**

Diameter (LED module)  
Housing / Mask Material  
Type Housing Color LED  
(Type / Color) Power  
Consumption Certificates

200 mm  
Polycarbonate (% 100 PC)  
Black  
Power LED, Red / Green  
Max 7 Watt / Module  
TS EN 12368:2015



## 800 X 600 MM TRAFFIC COUNTDOWN TIMER WITH LEDS

**PG-01-05-500**

Size Weight Housing Type  
Housing Color Input Voltage  
Digit Type Number of Digits  
LED Power Consumption

800x600 mm  
24 kg  
Metal  
Black  
220 V AC 50 Hz  
7 Segment  
2 Digits  
LED: 3 colors, 5mm,  
Red, Yellow, Green  
30 Watt



## 400 X 600 MM TRAFFIC COUNTDOWN TIMER WITH LEDS **PG-01-05-502**

Size Weight Housing  
Type Housing Color LED  
Power Consumption

400 x 600 mm 15 kg Metal Black  
3 colors, 5mm, Red, Yellow, Green  
17 Watt



## TRAM TRAFFIC LIGHT

### PG-04-01-100TM

Dimensions	300 x 500x380 mm
Housing	Metal (Electrostatic Powder Paint)
Diameter (LED Module)	100 mm
LED (Type / Color)	Power LED / White
Power Consumption	5 Watt / Module
Input Voltage	220 V AC 50 Hz



## TRAM TRAFFIC LIGHT with 5 MM (LEDS 200 mm)

### PG-01-05-501

Diameter	200 mm
Housing Material Type	Polycarbonate (% 100 PC)
Mask Material Type	Metal
LED	5 mm White
Power Consumption	Max. 5 Watt / Module
Operating Voltage	220v AC (± %10)
Operating Temperature	-40°C / +60°C
Tests	Insulation Resistance / High Voltage / Stray Current



## 300 mm TOLL APPROACH WARNING LED FLASHER (BLACK / STANDARD HOUSING)

### PG-01-40-351SB



Diameter: 300 mm	300 mm
Housing Type	Polycarbonate (% 100 PC)
Housing Color / Type	Black / Standard Housing
LED Type / Quantity	5mm LEDs, 80 pcs Yellow, 220 pcs white Outer Circle (Yellow LEDs)
Functions	always ON, Inner circle will flash white when triggered.
	230 V AC
Power	15 W (Max)
Power Consumption	IP 55s
Protection Degree	



## ACCESSIBLE PEDESTRIAN TOUCH BUTTON PG- 07-008

Dimensions Weight  
Body Type Body Color  
Operating Voltage  
Voice Level Detection  
Front Face Mounting

120 x 270 x 84 mm  
2 kg  
Polycarbonate  
Yellow-Black  
220 V AC  
Automatic / Acoustic Characteristic  
(According to the Environment dB Level)  
Touch Sensor  
Illuminated (Desired Logo and Figure can  
be made) With rubber backboard, suitable with  
Standard and Overhead Signal Pole  
IP 65

IP Class



## ACCESSIBLE PEDESTRIAN TOUCH BUTTON WITH VIBRATION PG-07-012

Dimensions Weight Body  
Type Body Color  
Operating Voltage Voice  
Level Detection Button  
Specs Front Face Side  
Panel Programming

150 x 320 x 100 mm  
2 kg  
Polycarbonate  
Yellow-Black  
220 V AC or 12-24 V DC  
Automatic / Acoustic Characteristic  
(According to the Environment dB Level)  
Capacitive Sensor with Adjustable Distance  
White Backlight and Vibrational Feedback  
Red-Green Illuminated Text and Symbols  
Magnetic, Tactile Raised Symbols  
g: Computer, Tablet, and Smartphone via Bluetooth,  
RFID, Audible Countdown, Able to Operate at the  
Scheduled Time.  
Suitable for Standard and Overhead Poles with  
Rubber Backing  
IP 65

Mounting

IP Class



## ACOUSTICAL SIGNAL TRANSMITTER FOR PEDESTRIANS PG-07-005

Dimension Weight Body  
Operating Voltage  
Intended Use Voice Level  
Voice dB Voice tone

28 x 18 x 13,5cm  
1,9 kg  
%100 PC, Black  
220 V  
Audible warning for visually impaired  
Automatic, according to the environment dB level  
30-90 dB  
Warning messages or "Beep" tone

## 200 mm - 300 mm TOTEM TRAFFIC LIGHT

PG-09-01-200

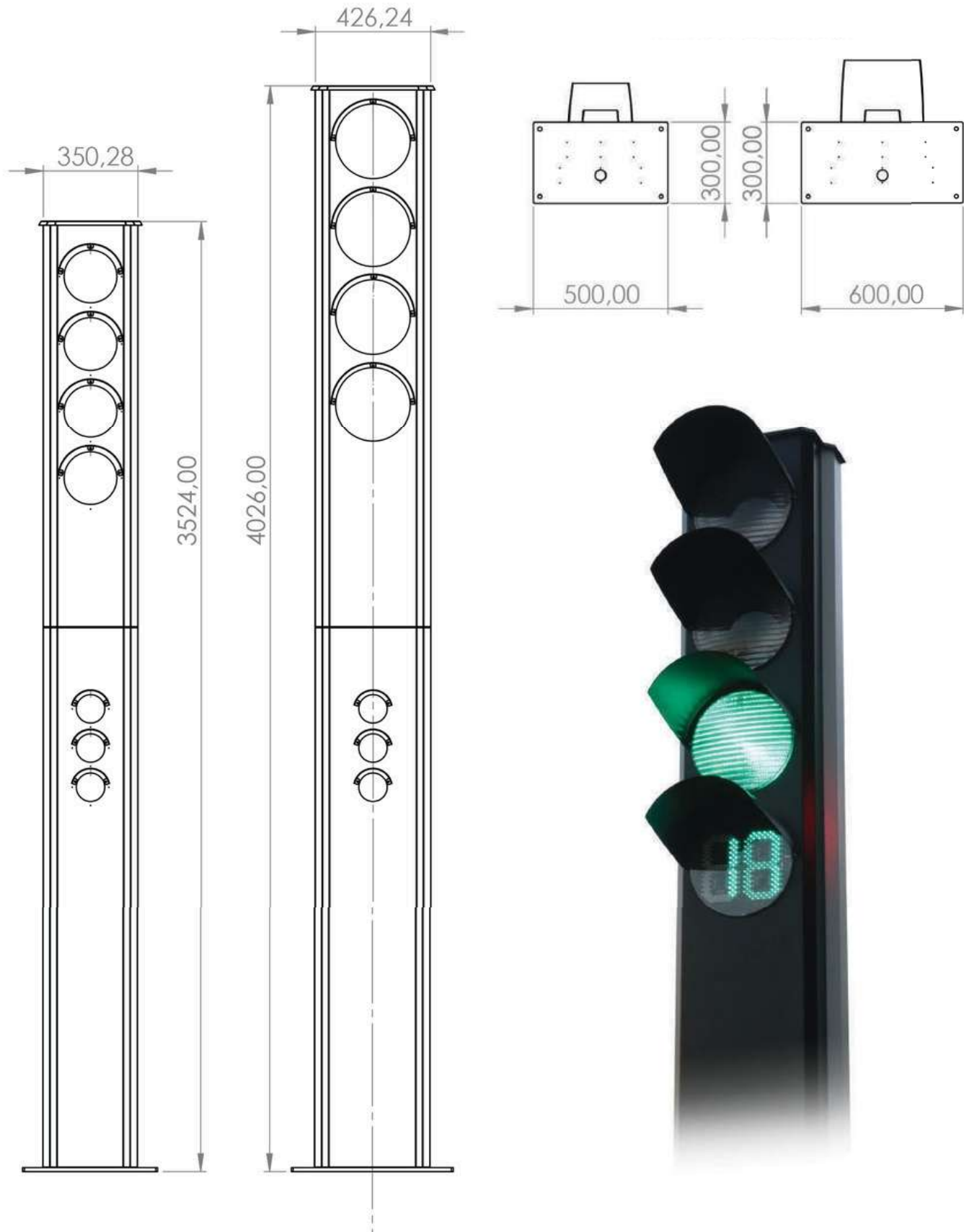
PG-09-01-300



**Input Voltage**  
**Material Type**  
**Housing Color**  
**Housing Size**  
300mm  
200mm

220 V AC 50 Hz Electrostatic  
Powder Coated Metal  
Structure Grey / Black 426 x  
187 x 4000 mm 350 x 187 x  
3500 mm

Bottom View





## OVERHEAD / L POLE

**Protection**  
**Pipe Type**  
**Standard**  
**Height**  
**Product Type and Codes**

Galvanised  
114 x 4 mm, 139 x 5 mm, 89 x 4 mm cylindrical iron pipe  
TS 301/2, Turkish Directorate of Highways Standards  
6 mt  
SN-05-600 Without Anchorage Base  
SN-05-625 With Anchorage Base



## STANDARD POLE

**Protection**  
**Pipe Type**  
**Standard**  
**Height**  
**Product Type and Codes**

Galvanised  
114x4 mm cylindrical iron pipe  
TS 301/2, Turkish Directorate of Highways Standards  
4 m  
SN-05-001 Without Anchorage Base  
SN-05-612 With Anchorage Base



## TAG SIGNAL POLE (N/U - TYPE)

**Height**  
**Wide**  
**Coating**  
**Pole Type**

6m  
Depending on road width, between 10 mt. and 15 mt.  
Hot-dip galvanized  
159 x 5 mm Cylindrical iron pipe



## COMPOSITE MANHOLE COVER (COMPOSITE JOINT BOX)

**PG-10-023**

Dimensions	485 x 485 x 400 mm
Material	Fiber Reinforced Plastics
Type	20 kg
Weight	20 kg
Bending Strength (Mpa)	Barcol Hardness (Kj/m <sup>2</sup> )
Water Absorption (%)	Density (Gr/Cm <sup>3</sup> )
Incombustibility Class	Min. 150
	Min 35
	Max. 70 mg.
	Min. 1.5
	Bff S 1



## INTERSECTION CONTROLLER STAND PG-10-001

Size	90 x 79 cm
Weight	17 kg
Paint	Electrostatic Paint
Intended Use	Used at installation of controller



## INTERSECTION CONTROLLER POLE PG-01-005

Size	150 cm
Weight	24 kg
Paint	Hot dip galvanized coating
Intended Use	Used at installation of controller



## GROUND ROD PG-10-010

Material	Copper
Type	1 m
Size	1.5 kg
Weight	



## FOCUS-LOOP VISION SOFTWARE PLATFORM PG-15-029

Language Support License

Communication Type

Operating System  
Platform

Version

Software Language

Width

Height

Tr, Eng  
COP, USB, Serial Communication  
Linux  
Embedded  
Python  
V1.5.0  
235mm  
110mm  
75mm



## PEDESTRIAN BUTTON PG-07-001

Compatible Pole

Compatible Device

Intended Use

Standard / Overhead Pole  
All devices which have  
pedestrian button output  
Used when pedestrians want to  
pass across the road.



## GREEN WAVE SATELLITE MODULE (GPS)

**PG-15-010**

Synchronization Compatible Device Master

Intended Use

GPS  
Maestro, Master  
Green Wave System



## FLASHER DEVICE

**PG-10-015**

Operating  
Voltage    Product  
Type      Intended  
Use

220 V / 12 V  
In the LED module or  
on the pole  
Switch to flash position



## CROSSING PAVEMENT LIGHT (FOR PEDESTRIAN)

**PG-15-050**

Size  
Weight  
Operating Voltage  
Material (Body)  
LED  
Protection  
Mounting

300 x 200 x 35 mm  
2.4 kg  
24 V DC  
Polycarbonate  
Red and Green LED Strip  
Resin-casting  
Holes are opened on the  
pavement and placed in  
it and glued with its adhesive



## MINI SINTRA INTERSECTION CONTROLLER

**PG-06-03-100M**

<b>Size</b>	1080 x 635 x 400 mm
<b>Operating Voltage</b>	220V AC
<b>Housing Type</b>	Galvanized Cover, Electrostatic Powder Paint
<b>Signaling Groups</b>	4 / 8 / 12 / 16 / 20 / 24 / 28 / 32 Group Options



## POLE TYPE SINTRA INTERSECTION CONTROLLER

**PG-06-03-500**

<b>Dimension</b>	600 x 400 x 300 mm
<b>Weight</b>	20 kgs
<b>Operating Voltage</b>	220 V AC
<b>IP Class</b>	IP 65
<b>Mounting</b>	with 2 pcs clamps for signaling pole
<b>Housing Type</b>	Electrostatic Powder paint, Galvanized Housing
<b>Programming</b>	USB / PC Interface / LCD Screen
<b>Signaling Groups</b>	4 / 8 / 12 / 16 Groups Options



## PROGRAMMABLE SIGNAL CONTROL UNIT

**PG-15-042**

**Size Weight**  
**Operating Voltage**  
**Fixation Instruction**

200 x 300 x 130 mm  
1.50 kg  
220 V AC  
with 2 Pcs Pole Clamp  
One triple signal head and one pedestrian signal head can be connected.  
Operating time can be easily changed with LCD screen.

## GARAGE KIT CONTROL UNIT

**PG-15-043**



**Size**  
**Weight**  
**Operating Voltage**  
**Mounting**  
**Technical Details**  
**Explanation**

200 x 300 x 130 mm  
2 kg  
220 V AC  
With 2 Pcs Brackets  
2 Pcs Vehicle Signal Head and 2 Pcs Pedestrian Signal Head can be connected. There are 4 pcs sensor input. Sensors can be optionally selected as magnetic sensor and camera sensor. It can also be controlled with remote control if needed. It can be programmed in desired scenario. It is especially used to prevent vehicles from colliding at garage entrances and exits and to determine transition priority.

# MAESTRO INTERSECTION CONTROLLER

Microcontroller-based modular structure - Easy programming with the Bluetooth or USB interconnection - Up to 32 signal groups, 32 and 32 isolated from the loop

- detector input
- Precision lamp current and voltage controls and secure signaling
- 4, 8, 12, 16, 20, 24, 28 and 32 group opportunities
- Ethernet, GPRS and SMS remote connection options
- 2 separate programming interface for new and experienced users
- All entries for the measurement of compliance with the census and occupancy rate
- External connections for 2 x USB port (PC, GSM, GPS, etc.).
- 16 units 16 units in different phases defined in phase and signal plan
- 48 units 16 units the signal sequence using the steps described in step
- Traffic Adaptive mode of operation for the logical function blocks
- Opening and closing sequences
- In order to avoid the unsafe or defective signalisation traffic signal plans for using the signal outputs to simulate
- The status of normal and fault modes flash, flash colors and frequencies



## Product Types and Codes

PG-06-01-100 4 gr Maestro Intersection Controller  
 PG-06-01-101 8 gr Maestro Intersection Controller  
 PG-06-01-102 12 gr Maestro Intersection Controller  
 PG-06-01-103 16 gr Maestro Intersection Controller  
 PG-06-01-104 20 gr Maestro Intersection Controller  
 PG-06-01-105 24 gr Maestro Intersection Controller  
 PG-06-01-106 32 gr Maestro Intersection Controller

## Product Types and Codes

PG-06-01-150 SSM Module  
 PG-06-01-151 CPU Module  
 PG-06-01-152 MMI Module  
 PG-06-01-153 PSM Module  
 PG-06-01-154 BP Module  
 PG-06-01-155 IO Module 8  
 Button





## UPS (UNINTERRUPTABLE POWER SUPPLY) FOR SIGNALIZED INTERSECTIONS)

**PG-15-082**

Size	615 x 800 x 1100 mm
Operating Voltage	24v 220v Electrostatic
Output Voltage	Powder paint galvanised
Housing Type	housing <20 ms IP65
Activation Time	1000 Watt 8-10 hours
IP Class	
Inverter Power	
Active Operating Hours	

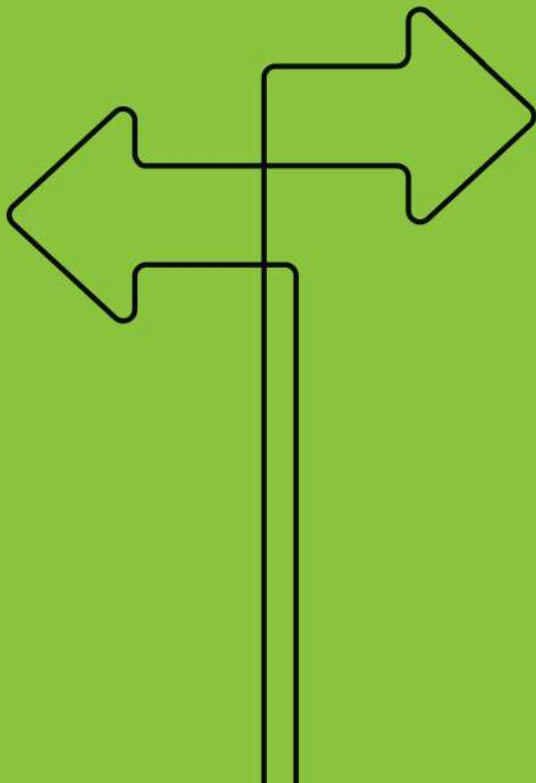
# SOLAR POWERED SYSTEMS

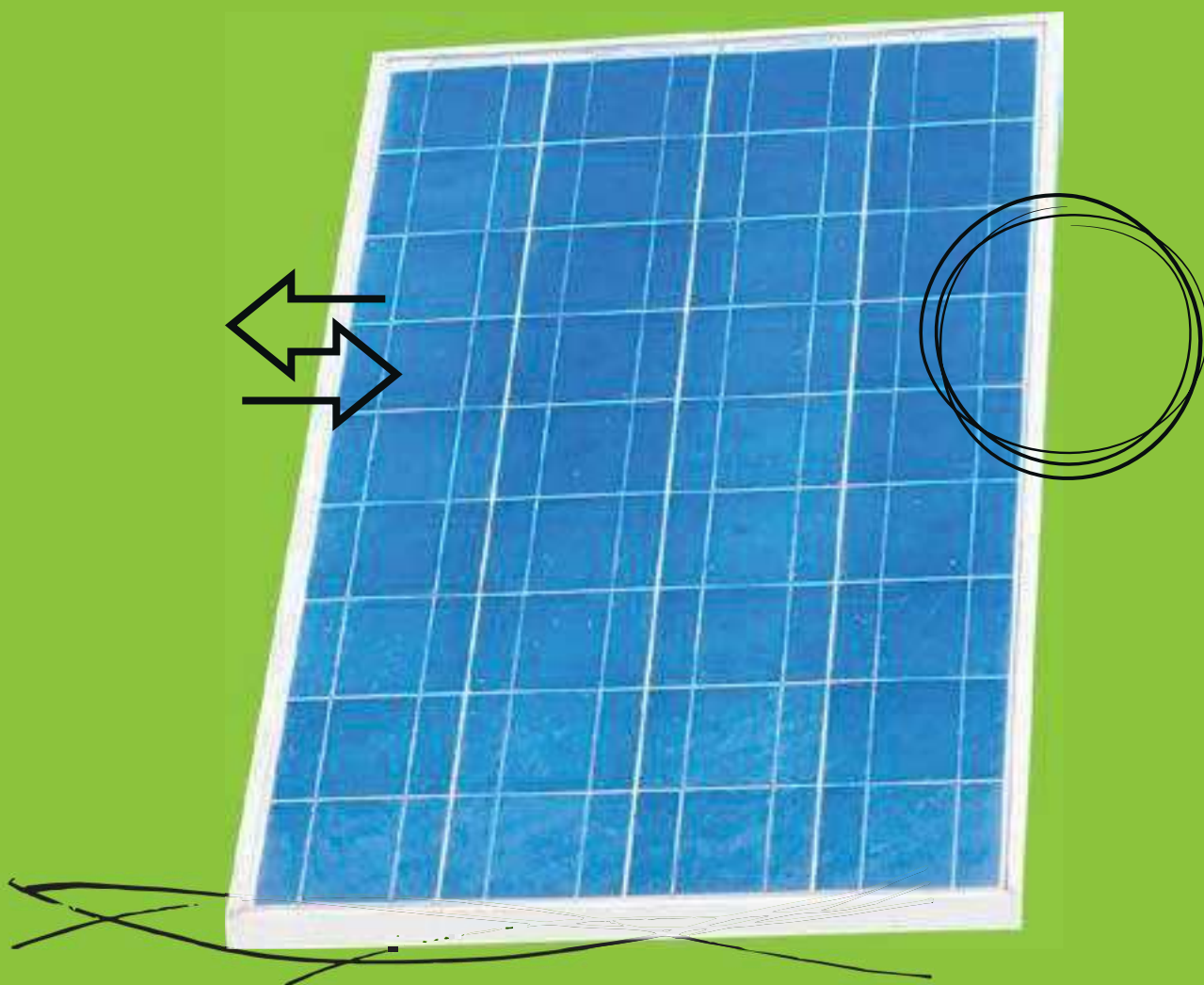
---

PGE products are manufactured according to the traffic and road safety standards.

Solar LED Flashers: LEDs that meet EN 12368 and EN 12966 standards, IEC 61215 certificated solar panel, TSE certificated battery and %100 PC body

Solar LED Traffic Signs: High Performance reflective sign, LEDs that meet EN 12368 and EN 12966 standards, IEC 61215 certificated solar panel, TSE certificated battery, IP 65 Metal or **Aluminium housing.**







## SOLAR ROAD STUD (RED) ECO PG-01-100E

<b>Size</b>	125 x 145 x 28 mm
<b>Material</b>	Al body and TPE protective base
<b>Weight</b>	0.45 kg
<b>Solar Panel</b>	0.4 W 3 V Solar Panel
<b>Battery</b>	1.2 V 600 mAh
<b>Other Details</b>	5 mm, 3 x 3 pieces LEDs at both sides
<b>Fixation</b>	2 x 7,5 x 80 mm buldex screw and 12 mm plastic fixing plug



## SOLAR POWER LED TRIANGLE FLASHER PG-01-200 (YELLOW) PG-01-201 (RED)

<b>Size</b>	280 x 250 x 135 mm
<b>Weight</b>	0.9 kg
<b>LED</b>	2 x 1 W Power LED, Red or Yellow
<b>Material</b>	PC-ABS
<b>Other Specifications</b>	Double-faced lens structure, 2 x 1.2 V 2000 mAh NiMh rechargeable battery, 1 x 3 V 250 mA solar panel 2 x 1 W EN 12368 traffic standard compatible power LEDs



## SOLAR TRIANGLE FLASHER (ECO) PG-01-210

<b>Size</b>	235 x 210 x 95 mm
<b>Weight</b>	0.8 kg
<b>LED</b>	2 x 1 W Power LED, Red, Yellow
<b>Other Specifications</b>	Double faced lens structure 1.2 V 1200 mAh Nimh recahargeable battery
<b>Material</b>	Polycarbonate / ABS
<b>Box Size In</b>	300 x 320 x 100 mm
<b>Box</b>	1 piece



## SOLAR LED SIGNS WITH NORMAL PERFORMANCE REFLECTIVE

**Solar Panel**  
**Battery**  
**Housing Type**  
**Reflective Material**  
**LED**

10W Polycrystal (20W Optional)  
12V 7Ah Dry Type  
Galvanized  
Normal Performance  
9 mm LED



## SOLAR LED SIGNS WITH HIGH PERFORMANCE REFLECTIVE

**Solar Panel**  
**Battery**  
**Housing Type**  
**Reflective Material**  
**LED**

10W Polycrystal (20W Optional)  
12V 7Ah Dry Type  
Black electrostatic powder paint  
High Performance  
9 mm LED



## SOLAR LED ROAD MAINTENANCE SIGNS WITH NORMAL PERFORMANCE REFLECTIVE

**Solar Panel**  
**Battery**  
**Housing Type**  
**Reflective Material**  
**LED**

10W Polycrystal  
12V 7Ah Dry Type  
Galvanized metal sheet  
Normal Performance  
9 mm LED



## 200mm SOLAR FLASHER WITH LEDs

**PG-03-01-200** Black Standard Housing

**PG-03-03-200** Black Sintra Housing

Diameter	200 mm
Color	Black, grey-black
Solar Panel	6 V, 5 W polycrystal
Accumulator	6 V, 4 Ah Dry type
LED	10 mm, Yellow, Red



## 300mm SOLAR FLASHER WITH LEDS

**PG-03-01-300** Black Standard Housing

**PG-03-03-300** Black Sintra Housing

Diameter	300 mm
Color	Black, grey-black
Battery	12 V, 7 – 18 Ah
Solar Panel	10-20 W
Battery	12 V, 7 – 18 Ah
LED	10 mm, Yellow, Red



## 300 mm SOLAR POWERED GPS SYNCHRONIZE D FLASHER WITH LEDS

**PG-03-01-400**

Diameter	300 mm
Housing Color	Black, Grey-Black
Options Solar Panel	20 W Polycrystal
Battery	12 V, 20 Ah Deep Cycle
LED	10 mm/5 mm, Yellow, Red
Synchronization	GPS module and indoor antenna
Operating Mode	Operating in 8 different scenarios, Smart Mode, Night Mode
LED Brightness	Adjustable (Dimming)
Power Consumption	Max 4 W
Charge Type	MPPT



## 200mm SOLAR FLASHER WITH POWER LEDS

**SL-04-01-200**

<b>Dimension</b>	200 mm
<b>LED</b>	Power LED / Yellow, Red
<b>Light Distribution</b>	Fresnel Lens
<b>Protection Cover</b>	5 W polycrystal
<b>Solar Panel</b>	6 V 4 Ah Dry type
<b>Battery</b>	



## 300mm SOLAR FLASHER WITH POWER LEDS

**SL-04-01-300**

<b>Diameter</b>	300 mm
<b>LED</b>	10 mm LED or Power LED / Yellow, Red
<b>Module</b>	2 pcs flasher
<b>Solar Panel</b>	20 W polycrystal
<b>Battery</b>	2 pcs 12 V 7 Ah Dry type



## 300mm SOLAR DOUBLE FLASHER WITH LEDs

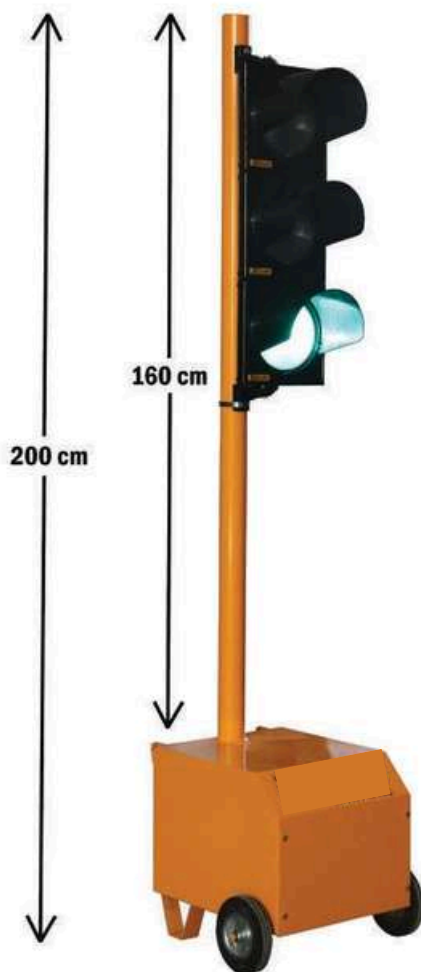
**SL-05-01-300**

<b>Diameter</b>	300 mm
<b>LED</b>	10 mm LED or Power LED / Yellow, Red
<b>Module</b>	2 pcs flasher
<b>Solar Panel</b>	20 W polycrystal
<b>Battery</b>	2 pcs 12 V 7 Ah Dry type

# PORTABLE VEHICLE SIGNAL HEAD (ECO)

## PG-02-01-11-200

<b>Battery</b>	12 V- 22 Ah Gel Battery
<b>Power Consumption</b>	18 Watt
<b>Housing Type</b>	Electrostatic Powder Paint Metal Housing
<b>Housing Size</b>	400 x 500 x 350 mm
<b>Product Type</b>	2 mt.
<b>Signal Head Type</b>	200 mm Vehicle Signal Head with Power LEDs (TS EN 12368 Certified)
<b>Signal Head Housing Type</b>	Polycarbonate (%100 PC)
<b>Weight</b>	50 kg



# SOLAR PORTABLE VEHICLE SIGNAL HEAD WITH POWER LEDS PG-02-01-10-200



## Solar Panel

## Battery

## Communication Frequency

## Communication Distance

## Power Consumption

## Housing Type

## Housing Size

## Pole Height

## Signal Head Type

## Signal Head Housing Type

## Fixation

## Hardware Content

## Optional Hardware

## Mode of Operation

2 x 20 Watt Monocrystal  
(2 axis movable) 12 V 65  
Ah Gel Battery RF Trans  
receiver 868 MHz 2 Km  
(Open Field) 18 Watt  
Metal Sheet (Foldable)  
400 x 500 x 3000 mm  
2.70 m 200 mm Vehicle  
Signal Head with Power  
LEDs Polycarbonate  
(%100 PC) 4 pieces of  
legs and 16 pcs screw  
and fixing plug Vehicle  
signal head, Solar panel  
group, Battery group,  
Regulator, Portable pole  
and housing set  
Pedestrian signal head,  
Pedestrian button 4 pcs  
of device can operate  
synchronized.



## INTELLIGENT PEDESTRIAN CROSSING SYSTEM

**Solar Panel**  
**Battery**  
**LED**  
**Reflective Material**  
**Detection**  
**Pole Height**  
**Pole Type**  
**Fixation**  
**Description**

10 W Polycrystal  
12 V, 7 Ah  
9 mm / Yellow, Red  
High Performance (Type-4)  
With Botton  
3 mt  
Metal, flanged  
With Anchorage and Decorative Base  
When the pre-warning system is started, the LED warning light towards the drivers will flash to warn the drivers and help pedestrians to cross safely.

# SOLAR MOBILE SPEED WARNING SYSTEM WITH DOPPLER RADAR 80 x 85 CM

**LD-02-03-260**

**Solar Panel**

4 x 20 Watt

(2 axis adjustable)

12V 65 Ah

Aluminum

800 x 850 x 55 mm

5 mm / Red, Green,

White

Doppler Radar

200 m

IP 65

to the environment

3 mt

Metal Sheet (Foldable)

Automatically according

**Battery**

**Radar Housing Type**

**Housing Size**

**LED**

**Radar Type**

**Speed Measurement Distance (max)**

**IP Class**

**Brightness Level**

**Pole Height**

**Pole Type**

**Fixation**

**Hardware Content**

5 pieces of Legs and 20  
pieces screw and fixing  
plug

Solar panel group, battery  
group, regulator, radar  
screen, doppler radar,  
mobile pole, and body.



# ECO SOLAR LED LIGHT 10 W

LXSL-SK1-10W 10 W



<b>Power</b>	10 W
<b>Light Output</b>	1200 lm
<b>Battery</b>	18 Ah
<b>Solar Panel</b>	20 W
<b>Operating Voltage</b>	12 V
<b>Charge Control</b>	4A PWM Smart Solar Charge Controller
<b>Pole Length</b>	3 meters
<b>Pole Diameter</b>	60 mm
<b>Operating Temperature</b>	-30°/+50°C

# REMOTE ACCESS FLASHER SYSTEM



**RF Communication Frequency**  
**RF Transmit Power**  
**RF Receiver Sensitivity**  
**Communication**  
**GPS Receiver Types**  
**GPS Receiver Sensitivity**  
**GPS LNA**  
**GSM Bands**  
**GSM Receiver Sensitivity**  
**Operating temperature**

868Mhz +27dBm -148dBm GPS / QZSS,  
GLONASS, Galileo, BeiDou -167 dBm  
Internal GSM 850 / 900 / 1800 / 1900  
MHz -109dBm -20/+85°C  
Bidirectional (Transceiver)

- Electric or solar powered operation
- Energy monitoring (battery, solar panel or power supply voltages)
- Location tracking on the map
- Failure tracking and planning
- Server access via GSM or Ethernet
- Compatible with external sensors (fog, meteorological, temperature)
- RF based communication
- GPS based synchronization
- Variable operating modes
- Low power consumption

## Product Type and Codes

**SPG-03-01-400** 300 mm Solar Flasher RF/GPS Based  
**PG-22-001 PG-22-002** Remote Access Device  
Web Based Central Management Software

# LED TRAFFIC SIGNS

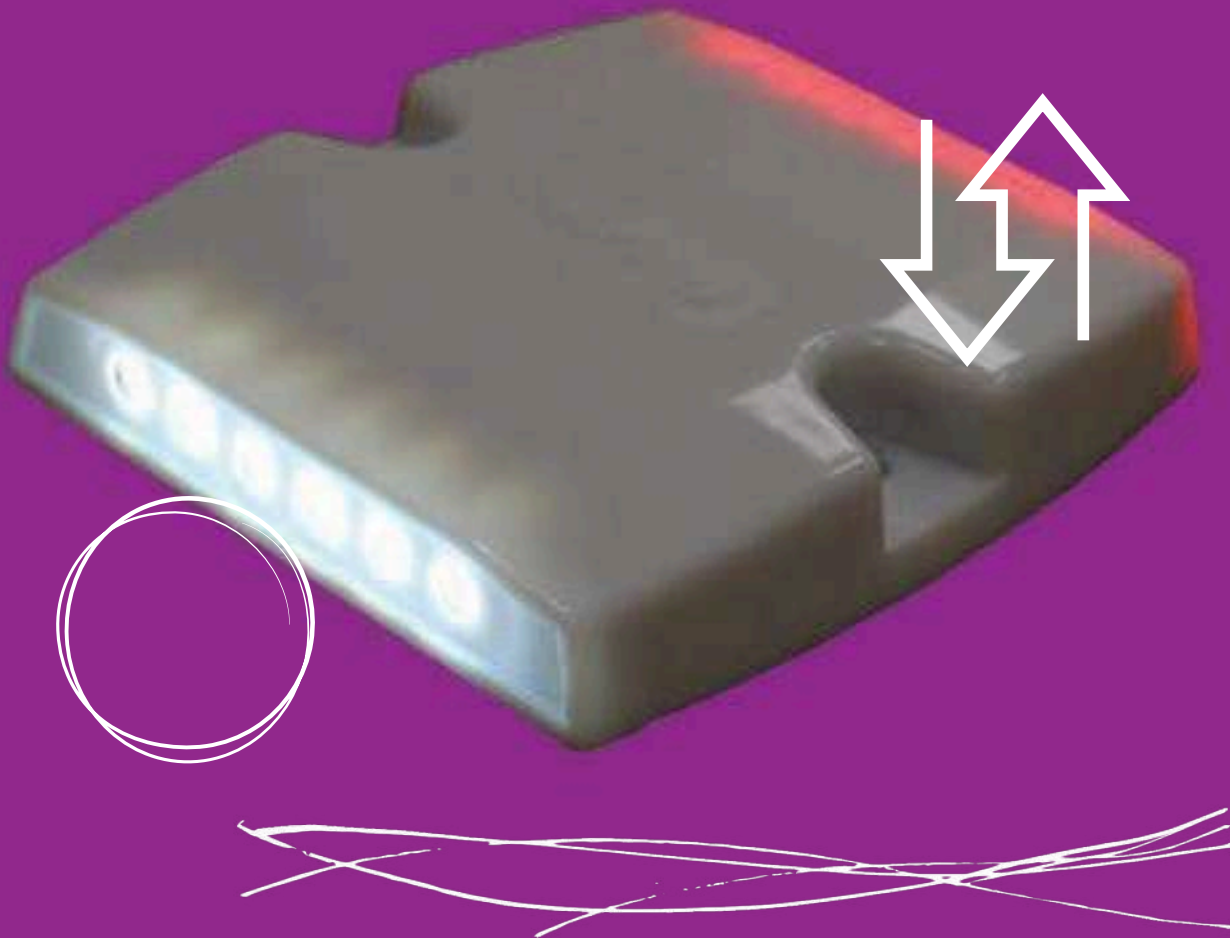
PGE products are manufactured according to the traffic and road safety standards.

**LED Traffic Signs (Constant and Variable Traffic Signs - VTS):** Metal or aluminium housings with IP 65 protection class, LEDs that meets EN 12368 and EN 12966 standards.  
**LED Variable Message Signs (VMS):** Metal or aluminium housings with IP 65 protection class, LEDs that meets EN 12368 and EN 12966 standards. VMSs can be controlled at site (with

PC or notebook) or remote controlled (centrals) by fiberoptics or GPRS or ADSL.

**LED Speed Warning Systems (Doppler Radar Displays):** Metal or aluminium housings with IP 65 protection class, LEDs that meets EN 12368 and EN 12966 standards. Customized sizes or LED colors related to Highways or Municipalities can be designed.





## 85 x 85 cm URBAN SPEED WARNING SYSTEM WITH DOPPLER RADAR

**LD-02-03-200**

Size	850 x 850 x 55 mm Housing
Weight	14 kg.
LED	5 mm/Red, Green, White
Radar Type	Doppler Radar
Housing Type	Aluminium
Brightness Level	Automatically (LDR)
Speed Measurement Distance (Max)	200 m
Energy	220 V AC / Solar Powered (Optional)



## 140 x 55 cm URBAN SPEED WARNING SYSTEM WITH DOPPLER RADAR

**LD-02-03-360**

Size	1400 x 550 x 55 mm
Weight	25 kg
LED	5 mm / Red, Green
Brightness Level	Automatically according to the environment
Speed Measurement Distance (Max)	200 m
Radar Type	Doppler Radar
Technical Details	In accordance with EN 12368 standard. Speed display and visual warning on graphical display with Red and Green LEDs.
Housing Type	Aluminium
Energy	220 V AC / Solar Powered (Optional)



## 160 x 160 cm LED RADAR (SPEED WARNING SYSTEM) LD-02-02-150

Size	1600 x 1600 x 170 mm
Weight	90 kg
LED	5 mm, amber color
Brightness Level	Automatic (LDR)
Energy	220 V AC / Solar power (optional)



## 240 x 200 cm SPEED WARNING SYSTEM WITH DOPPLER RADAR LD-02-01-100

Size	2400 x 2000x200mm(Housing)
Weight	160 kg
LED	5mm, Yellow
Energy	220 V AC / Solar Powered (Optional)
Brightness Level	Automatically (LDR)
Speed measurement Distance	200 m



# SPEED VIOLATION DETECTION WITH PLATE RECOGNITION

LD-02-05-100



Dimensions	1390 x 1010 x 55 mm
Weight	30 kg
LED	5mm (Red, Green, White)
Brightness	Dynamic Contrast
Camera	8 MP Progressive Scan CMOS
Speed Detection	Unit Microwave Radar
Violation Transfer	USB, Wifi
Interface	Excel
Speed Detection Range	10-250 km/h
Energy	220V AC
Pole	2 pcs ( For Camera & Display)
Software	License Plate Recognition System Software

## MOBILE SPEED WARNING SYSTEM

LD-02-05-001



Size	Tripod	Height	540 x 470 x 100 mm
Weight	Housing		2-3 m
Type	Housing	Color	7,75 kg / Tripod; 4,50 kg
LED		Power	Aluminum
Consumption	Speed		Black
Measurement			5 mm / Red, Green
Distance	(Max)		20 Watt
Radar	Type		200 m
Brightness	Level		Doppler Radar
Battery			Automatic Based on Environment
			12 V Lion (Rechargeable)



## 60 x 60 cm MAXIMUM SPEED LED SIGN LD-01-02-100

Ölçü Size	600 x 600 x 80 mm (housing)
Weight	22.50 kg
LED	5 mm, red, white
Energy	220 V AC
IP Class	IP 65
Brightness Level	Automatically according to environment



## 60 x 60 cm GAUGE-HEIGHT LED SIGN LD-01-02-150

Size	600 x 600 x 80mm(Housing)
Weight	22.50 kg
LED	5 mm, red, white
Energy	220 V AC
Optional	RF Remote control
Brightness Level	Automatically according to the environment
IP Class	IP 65



## 60 x 60 cm ATTENTION-SLOW LED SIGN LD-01-02-200

Size	600 x 600 x 80 mm (housing)
Weight	22.50 kg
LED	5 mm / Red, White
Energy	220 V AC
IP Class	IP 65



## 100 cm MAX. SPEED LIMITATION LED SIGN

### LD-01-01-100

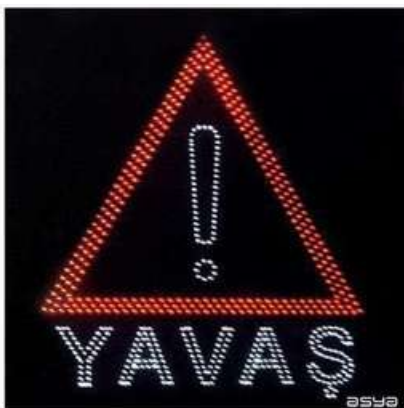
Size	1000 x 1000 x 110mm(Housing)
Weight	46.50 kg
LED	5 mm, red, white
Energy	220 V AC
Optional	RF Remote Controller
Speed Options	30-40-60 or 30-50-70
Brightness level	Automatically according to the environment
IP Class	IP 65



## 100 x 100 cm GAUGE-HEIGHT LED SIGN

### LD-01-01-150

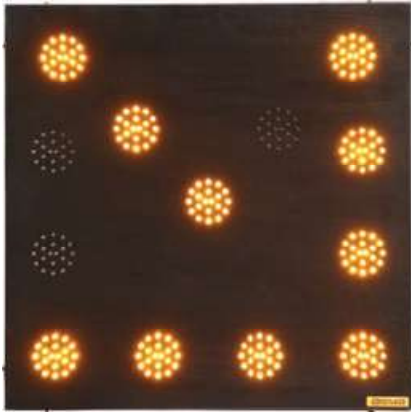
Size	1000 x 1000 mm (Housing)
Weight	46.50 kg
LED	5 mm, red, white
Energy	220 V
Optional	RF Remote Controller
Height Options	3.60 – 4.60
Brightness Level	Automatically according to the environment
IP Class	IP 65



## ATTENTION - SLOW LED SIGN

### LD-01-01-200

Size	1000 x 1000 x 110mm(Housing)
Weight	46.50 kg
LED	5 mm / Red, White
Energy	220 V AC
Brightness Level	Automatically according to the environment
IP Class	IP 65



## COMPULSIVE WAY (LEFT – RIGHT) LED SIGN

**LD-01-03-300**

Size	690 x 690 x 40 mm (Housing)
Weight	22 kg
LED	5 mm, Yellow
Energy	12-24 V
Options	Right arrow flasher, left arrow flasher
Fixation	With truck mounting equipments
IP Class	IP 65



## LANE CONTROL SYSTEM (LCS)

**LD-01-01-250**

Size	1000 x 1000 x 110 mm (Housing)
Weight	46.50 kg
LED	5 mm, red, green
Energy	220 V AC
Optional	RF Remote controller
Brightness Level	Automatically according to the environment
IP Class	IP 65



## SCHOOL - PEDESTRIAN CROSSING LED SIGN

**School: LD-01-04-100**

**Pedestrian: LD-01-04-150**



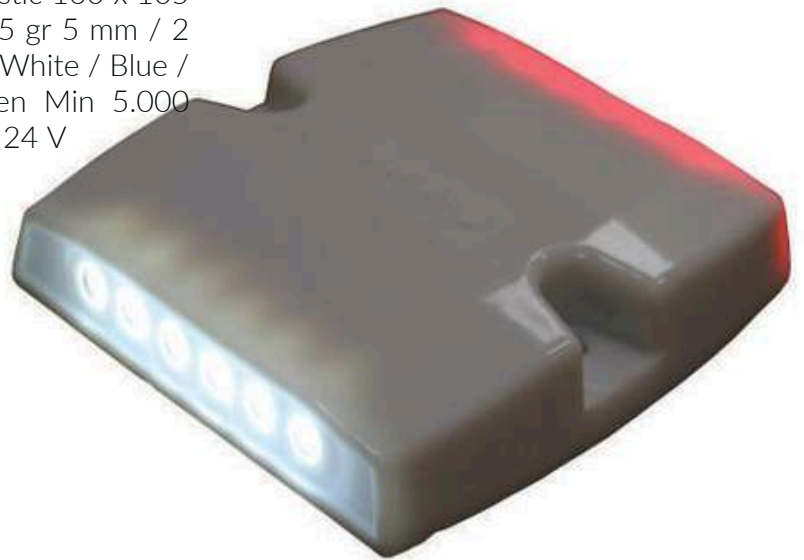
Size	650 x 650 x 80 mm (Housing)
Weight	27.80 kg
LED	5 mm, red, yellow
Energy	220 V AC
IP Class	IP 65

## ELECTRICAL LED ROAD STUD (TUNNEL STUD)

### LD-04-01-110

**Material**  
**Size / Weight**  
**LED Type / Number of LEDs**  
**LED Colors**  
**Luminous Intensity**  
**Protection Class**  
**Operating Voltage**

PC or ASA Plastic 100 x 105  
 x 18 mm / 275 gr 5 mm / 2  
 x 6 pcs. Red / White / Blue /  
 Amber / Green Min 5.000  
 mcd IP 68 DC 24 V



## LED ROAD STUD CONTROLLER

### LD-04-01-203

**Size**  
**IP Class**  
**Operating Mode**  
**Max. Number of Buttons**  
**Input Voltage**  
**Output Voltage**  
**Output Terminals**  
**Control Modes**

15 x 35 x 50 cm  
 IP 66  
 Always ON – Flash –  
 Sequential for each side  
 50 – 100  
 (According to the Project)  
 220 V AC  
 24 V DC  
 4  
 With LCD Screen inside  
 the cabinet or with SCADA





## COMBINED FIRE EXTINGUISHER AND SOS SIGN FOR TUNNELS

### LD-05-02-100

Housing Material /Color	DKP Metal / Electrostatic Black Paint
Dimensions	710 x 300 x 125 mm
Weight	8.50 kg
LED Specs	High performance White Power LEDs
Reflective Class	High Performance Prismatic Type 4
Surface Material	3 mm Plexiglass
Operating Voltage	220 V AC / 50 Hz.
Power Supply	12 V SMPS
Cover Lock	Structure with latch
Max. Power Consumption	20 W



## FIRE EXTINGUISHER SIGN FOR TUNNELS

### LD-05-03-100

Housing Material / Color	DKP Metal / Electrostatic Black Paint
Dimensions	365 x 300 x 125 mm
Weight	5 kg
LED Specs	High performance White Power LEDs
Reflective Class	High Performance Prismatic Type 4
Surface Material	3 mm Plexiglass
Operating Voltage	220 V AC / 50 Hz
Power Supply	12 V SMPS
Cover Lock	Structure with latch
Max. Power Consumption	Max. Power Consumption: 15 W



## LED SURFACE ILLUMINATED EMERGENCY EXIT TUNNEL SIGN

### LD-05-01-100

Housing Dimensions	505 x 885 x 180 mm
Surface Size	440 x 400 mm
Weight	8 kg
Housing Material	Aluminium
LED Type	White Power LED
Max. Power Consumption	25 W
Reflective Class	High Performance Prismatic Type 4
Surface Material	3 mm Plexiglass
Operating Voltage	220 V AC / 50 Hz
Power Supply	12 V SMPS
Cover Lock	Structure with latch



**PAK GERMAN  
ENGINEERS**

## EMBEDDED ALUMINIUM HARD-WIRED LED ROAD STUD

### LD-04-01-900



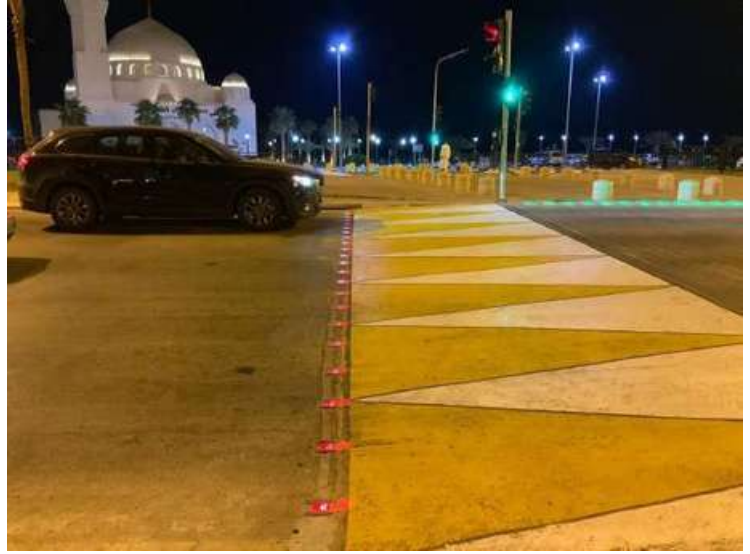
<b>Size</b>	120 x 118 x 71 mm
<b>Weight</b>	0.8 kg
<b>Body Material</b>	Aluminium
<b>LED</b>	5 mm / Red, Green
<b>Number of LEDs</b>	3 pcs Red, 3 pcs Green (Total 6 pieces on every direction)
<b>Operating Voltage</b>	24 V DC
<b>Fixation</b>	Holes are opened on the road and placed in the slot and glued with adhesive

## CROSSING PAVEMENT LIGHT (FOR PEDESTRIAN)

### PG-15-050



<b>Size</b>	300 x 200 x 35 mm
<b>Weight</b>	2.4 kg
<b>Operating Voltage</b>	24 V DC
<b>Material (Body)</b>	Polycarbonate
<b>LED</b>	Red and Green LED Strip
<b>Protection</b>	Resin-casting
<b>Mounting</b>	Holes are opened on the pavement and placed in it and glued with its adhesive



# PLASTIC, RUBBER, METAL ROAD SAFETY PRODUCTS

---

PGE products are manufactured according to the traffic and road safety standards.

reflective tapes.

Traffic Cones: PVC material, normal or high performance reflectives.

Aluminium Road Studs: Resistant to heavy road traffic pure aluminium body.

Delineators: %100 TPU material, flexible, normal or high performance reflectives.

Warning Posts: PPC material, rubber or plastic bases, normal or high performance reflectives

Parking Products: Corner protectors, traffic mirrors, car stoppers etc.

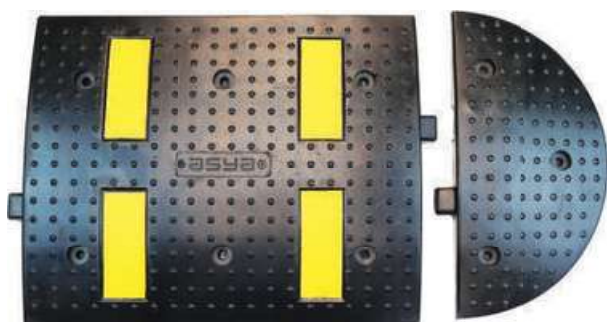




**PAK GERMAN  
ENGINEERS**



**PAK GERMAN  
ENGINEERS**

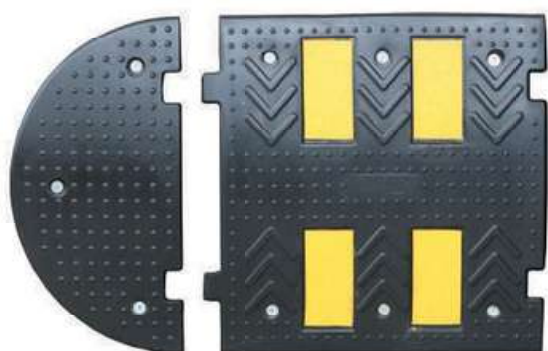


## RUBBER SPEED BUMP

50 x 40 x 4.5 cm

**PL-01-100**

Body Size	500 x 400 x 45 mm
Header Size	400 x 200 x 45 mm
Material	Rubber Black 7 kg
Color Options	4x reflective yellow road tape 10 x 120 mm
Weight Body	2 kg
Header	Trifon screw, 16 mm plastic fixing plug
Tech. Details	
Fixation	



## RUBBER SPEED BUMP

50 x 50 x 4.5 cm

**PL-01-200**

Body Size	500 x 465 x 45 mm
Header Size	500 x 250 x 45 mm
Material	Rubber Black 9 kg
Color Options	Header: 2.80 kg 4 x reflective yellow road tape 10 x 120 mm
Weight Body	4 kg
Tech. Details	Trifon screw, 16 mm Plastic fixing plug
Fixation	



## RUBBER SPEED BUMP

50 x 60 x 4.5 cm

**PL-01-300**

Body Size	600 x 470 x 45 mm
Header Size	600 x 300 x 45 mm
Material	Rubber Black 10.50 kg
Color Options	4 kg 4/6 x reflective yellow road tape 10 x 120 mm
Weight Body	Trifon screw, 16 mm Plastic fixing plug
Header	
Tech. Details	
Fixation	

## RUBBER SPEED BUMP (ECO) 50 x 40 cm

**PL-01-110**



Body	Size	500 x 400 x 45 mm	400 x
Header	Size	200 x 45 mm	Rubber Black
Material	Type	5.50 kg / Header	2.55 kg
Color	Options	2x yellow rubber tape	10 x
Weight:	Body	100 mm Trifon screw,	16
Technical Details		mm plastic fixing plug	
Fixation			

## RUBBER SPEED BUMP (ECO) 50 x 50 cm

**PL-01-210**



Body	Size	Header	Size	Material	Type
Color	Options	Weight	Body	Technical	
Details	Fixation		500 x 500 x 45 mm	500 x	
			250 x 40 mm	Rubber Black	
			6.75 kg / Header	2.35 kg	
			4x yellow rubber tape	10 x	
			100 mm Trifon screw,	16	
			mm plastic fixing plug		

## RUBBER SPEED BUMP (ECO) 50 x 60 cm

**PL-01-310**



Body	Size	500 x 600 x 45 mm	600 x 300
Header	Size	x 45 mm	8.25 Kg 3.00 Kg
Body	Weight	Rubber	Black 6x
Header	Weight	Yellow Road Tape	10 x 100 mm
Material		Trifon screw and	16 mm Plastic
Color	Options	fixing plug	
Tech. Details			
Fixation			



## RUBBER SPEED BUMP 90 x 50 cm

**PL-01-800**

**PL-01-801**

Body	Size	500 x 900 mm	500 x 250 mm
Header	Size	Rubber	Black
Material	Type	8x yellow rubber tape	10 x 120 mm
Color	Options	trifon screw,	16 mm plastic fixing plug
Technical details			
Fixation			

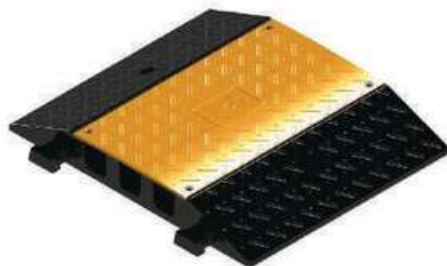


## TYRE KILLER

**PE 50 12290 UB**

**PE 50 12291 UB K**

Header Size	500 x 500 x 60 mm
Body	90 x 500 x 60 mm
Weight	7,3 kg
Material	Metal / PPC
Fixation	6 pcs trifon screw and plastic fixing plug



## CABLE DUCT SPEED BUMP

**PE-50-12298 UB**

**PE-50-12299 UB**

Body Size	500 x 600 x 75 mm	500 x 600 x 75 mm
Corner Size	8.7 kg / Corner	3 kg PPC
Weight	2 pcs	10 x 100 mm trifon screw,
Material	16 mm plastic fixing plug	5 cm,
Fixation	There are 3 cable ducts	
Other Features		





## CARPARK CORNER GUARD

**PL-07-300**

Dimensions	90 x 115 x 810 mm
Weight	1.4 kg
Material type	PVC
Color Options	Black, optional any colour
Technical details	High performance reflective sheet
Installation	6 pcs 4 x 50 mm screws, pegs, washers



## RUBBER CAR PARK CORNER GUARD (ECO-CORNERED)

**PL-07-310**

Size	800 x 100 x 100 mm
Weight	1.6 kg
Technical Details	4 Pcs High Reflective Sheet
Material	Rubber
Fixation	6 Pcs buldex screw and nail



## OVAL RUBBER CAR PARK CORNER GUARD (ECO)

**PL-07-320**

Size	Weight	800 x 100 x 100 mm
Technical		2.75 Kg
Details	Material	4 Pcs High Reflective Sheet
Fixation		Rubber
		6 Pcs buldex screw and nail



## DELINEATOR 30 x 8 cm (ECO)

**PL-03-100**

<b>Dimension</b>	300 x 80 mm
<b>Base Diameter</b>	200 mm
<b>Weight</b>	0.67 kg (±%5)
<b>Material</b>	TPU
<b>Color</b>	Orange, other colors are optional
<b>Reflective</b>	Metallized
<b>Technical Details</b>	Flexible, unbreakable
<b>Fixation</b>	10 x 100 mm trifon screw and 16 mm plastic fixing plug



## DELINEATOR 45 x 8 cm (ECO)

**PL-03-200**

<b>Size</b>	450 x 80 mm
<b>Base Diameter</b>	200 mm
<b>Weight</b>	0.90 kg
<b>Reflective</b>	Metallized
<b>Material</b>	TPU
<b>Color</b>	Orange, other colors are optional
<b>Technical Details</b>	Flexible, unbreakable
<b>Fixation</b>	10 x 100 mm Trifon screw, 16 mm Plastic Fixing Plug



## DELINEATOR 75 x 8 cm

**PL-03-400**

<b>Size</b>	750 x 80 mm
<b>Base Diameter</b>	200 mm
<b>Material</b>	TPU
<b>Reflective Material</b>	High Performance, Class 3 (circular and rectangular) Reflective Sheet
<b>Color Options</b>	Orange, other colors are optional
<b>Fixation</b>	10 x 100 mm Trifon screw, 16 mm Plastic Fixing Plug



## DELINEATOR 75 x 8 cm (ECO) PM-70-2076

Dimension	
Base Diameter	
Weight	750 x 80 mm
Material	210 mm
Color	0.90 kg (±%5)
Reflective	Compound
Technical Details	Orange
Fixation	3 pieces Metallized Reflective Flexible, unbreakable 10 x 100 mm trifon screw and 16 mm plastic fixing plug



## DELINEATOR 100 x 8 cm (ECO) PL-03-850

Size	1000 x 80 mm
Base Diameter	200 mm
Weight	1.50 kg
Reflective	Metalized
Material	TPU
Color	Orange, other colors are optional
Technical Details	Flexible, unbreakable
Fixation	10 x 100 mm Trifon screw, 16 mm Plastic Fixing Plug



## FLEXIBLE DELINEATOR SIGNBOARD PL-03-700

Size	
Base Diameter	
Material	550 x 215 mm
Reflective Material	1.15 kg TPU High Performance, Class 3 (circular and rectangular) Reflective Sheet
Color Options	Black, optional other colors
Fixation	On 300 x 80 mm, 450 x 80 mm or 750 x 80 mm Traffic Delineator by screwing



## PLASTIC ROUND TRAFFIC POST WITH PLASTIC BASE (ECO)

### PL-06-201

Size  
Weight  
Material Type  
Reflective Quantity  
Base Diameter  
Base Details  
Technical Specifications

120 x 1200 mm 9.50 Kg PP+PE  
3 pieces 400 mm Plastic Base  
Warning signs, flashers, etc. can  
be attached using the upper  
grooved section.



## PLASTIC ROUND TRAFFIC POST WITH PLASTIC BASE (ECO)

### PM-70-4125

Size  
Weight  
Material  
Reflective Tape  
Base Diameter  
Base Details

70 x 1000 mm  
4.30 kg PP+PE  
4 pieces 350  
mm Plastic  
Base



## PLASTIC ROUND TRAFFIC POST WITH PLASTIC BASE (ECO)

### PL-06-202

Size  
Weight  
Material  
Reflective Tape  
Base Diameter  
Base Details

70 x 1000 mm  
4.30 kg PP+PE  
4 pieces 350  
mm Plastic  
Base



## PLASTIC ROUND TRAFFIC POST WITH PLASTIC BASE

### PL-06-200

**Size**

**Material**

**Weight**

**Fixation**

**Color Options**

**Reflective Material**

110 x 1200 mm

PPC (post) and PP (base)

8.3 kg (1.4 kg / 6.9 kg)

Portable or optional with screw and nails

Orange, Red and optional

3 pieces, optional up to 6 pieces



## PLASTIC ROUND TRAFFIC POST WITH RUBBER BASE

### PL-06-100

**Size**

**Material**

**Weight**

**Mounting Shape**

**Color Options**

**Reflective Material**

110 x 1200 mm

PPC ve Rubber

8.3 kg (1.4 kg / 6.9 kg)

Portable or optional screw-dubel

Orange, Red, other optional colors

3, optional up to 6



## WARNING BARRIER WITH POSTS

### PL-06-300

**Size**

**Weight**

**Reflective**

**Color Options**

**Technical Details**

1800 x 1200 mm

19 kg (Plastic base) / 21 kg (Rubber base)

Normal Performance

Red, Orange, Optional

Portable, 2 pcs post and 1 pcs reflective sign

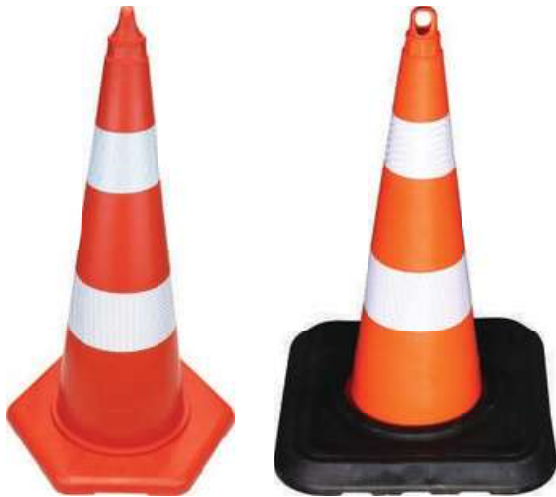


## PVC TRAFFIC CONE 50 cm DOUBLE REFLECTIVE 6 CORNERS

**PL-02-156**

Height  
Base Size  
Weight  
Product Type  
Base Specification  
Color Options  
Technical Specifications

500 mm 330 mm 1200 g  
PVC 6 Corners Orange With  
Hook, Double Reflective Type



## PVC TRAFFIC CONE 75 cm WITH BASE (ECO)

**PL-02-356**

**PL-02-355 (With Base)**

Height  
Base Size  
Weight  
Material Type  
Base Specification  
Color Options  
Other Details

750 mm 490 mm 5400 gr PVC 4  
edges Orange Handling hook, 2  
pieces reflective material.

## PVC TRAFFIC CONE (ECO) 90 cm DOUBLE REFLECTIVE

**PL-02-401**

Height  
Weight  
Base Type  
Base Edge Size  
Material  
Color Options  
Technical Detail

900 mm  
3.3 kg  
4 edges  
380 x 380 mm  
PVC  
Orange  
Handling hook





## ULTRA CAT EYES CONE

### PE-50-12351TKA

Size	600 mm
Base Size	370 mm (4 Edge)
Material	PPC
Color Options	Red, Yellow, Blue, Green
Technical Detail	Accessorize Applicable
Product Types and Codes	PE-50-12351 600 mm / 1.35 kg



## 6 EDGES TRAFFIC CONE (ECO)

### PE-50-12302TK

Size	500 mm
Base Size	350 mm (6 Edge)
Material	PPC
Color Options	Red
Technical Detail	With handling hook



## PEDESTRIAN CHANNELIZERS

### PE-50-12205

Size	500 mm	250
Base Size	mm	PE
Material	Anthracite, Blue	
Color Options	1.50 kg	
Weight		



## RUBBER PARKING CAR STOPPER

**PL-07-100**

<b>Size</b>	740 x 150 x 100 mm
<b>Material</b>	Rubber
<b>Weight</b>	6.50 kg
<b>Color Options</b>	Black
<b>Reflector</b>	4xReflective Yellow Road Tape
<b>Fixation</b>	10 x 150 mm Trifon screw, 16 mm Plastic screw



## PARKING CAR STOPPER (PIPE TYPE)

**PL-07-150**

<b>Length</b>	1800 mm
<b>Height</b>	120 mm
<b>Flange</b>	Diameter 180 mm / Thickness 2.5 mm
<b>Pipe</b>	Diameter 60 mm / Thickness 2 mm
<b>Paint</b>	Black, Electrostatic paint with yellow reflective sheets
<b>Installation</b>	10 x 120 mm screw and 16 mm plastic plug



## PARKING CAR STOPPER 180 cm

**PL-07-110**

<b>Size</b>	<b>Weight</b>	1830 x 150 x 100 mm
<b>Technical</b>		17.5 Kg (2 Pcs)
<b>Details</b>		8 Pcs Reflective Tape with Glass Beads
<b>Reflective</b>		Yellow/White
<b>Material</b>		Rubber
<b>Fixation</b>		6 Pcs ( 10 x 150 mm Trifon Screw, 16 mm Plastic Screw)

## RUBBER ROAD SEPERATOR

### PL-01-500



**Height**  
**Weight**  
**Material type**  
**Color Options**  
**Paint**  
**Technical Details**  
**Installation**

600 mm 3.1 kg 2 mm iron  
 Yellow, Red, Black Electrostatic  
 paint Locked, with key, with  
 reflective 10 X 100 mm trifen  
 screw and 16 mm plastic plug

## RUBBER CAR STOPPER (WITH RUBBER MECHANISM POLE)

### PL-01-562



**Stopper Size** 1800 x 200 x 150 mm  
**Pole Size** 920 x 60 mm  
**Pole Reflective** 3 pcs, high performance reflector  
**Road Stud Size** 100 x 100 mm  
**Road Stud Reflective** 2 pcs Prismatic Reflective  
**Weight** 44 Kg  
**Material** Rubber Stopper, Plastic Pole  
**Fixation** 3 pcs ( 10 x 150 mm Trifen Screw, Bolt 16 )

## PLASTIC ROAD SEPERATOR WITH 75 CM DELINEATOR

### PL-05-400



**Size** 1000 x 200 x 80 mm  
**Total Weight** 3.9 kg  
**Delineator Weight** 0.9 kg  
**Base Weight** 3 kg  
**Material** PPC Base – TPU Delineator  
**Delineator Size** 750 x 80 mm  
**Reflective** 3 pcs Metallized Reflective Band  
**Delineator Color** Orange  
**Base Color** Yellow  
**Fixation** 4 pcs 10 x 120 mm Trifen screw and plastic plug



## ALUMINIUM ROAD STUD WITH DOUBLE RODS

**PL-04-400**

Size	220 x 100 x 40 mm
Material	Al
Weight	0.94 kg
Reflector	2 x 171 pcs glass beads
Compression Resistance	35 tons
Fixation	14 x 65 mm 2 rods



## ALUMINIUM ROAD STUD WITH ROD

**PL-04-200**

Size	100x100 x 20 mm
Material	Al
Weight	0.32 kg
Reflector	2x43pcs glass beads
Compression Resistance	25 tons
Fixation	25x50mm rod



## ALUMINIUM ROAD STUD WITH ROD (GLASS BEADS)

**PE-50-12011-YB**

Body	
Weight	21x100 x 100 mm
Material	0.40 kg
Reflector	Al
Fixation	2x5cm anchorage with epoxy cement 3+3Cat eye



## PLASTIC OVAL ROAD STUD WITH GLASS BEADS

**PL-05-600**

<b>Size</b>	220 x 120 x 28 mm
<b>Material</b>	PPC
<b>Weight</b>	0.23 kg
<b>Color Options</b>	Yellow, other colors are optional
<b>Reflective</b>	6 x 7 pcs Glass Beads (Red or White)
<b>Compression Resistance</b>	35 tons
<b>Fixation</b>	with 4 pcs 7.5 x 80 mm buldex screw and nail



## PLASTIC MINI ROAD STUD WITH GLASS BEADS

**PL-05-500**

<b>Size</b>	128 x 88 x 30 mm
<b>Material</b>	PPC
<b>Weight</b>	0.135 kg
<b>Color options</b>	Yellow, other colors are optional
<b>Reflector</b>	4 x 7 pcs glass bead (Red or White)
<b>Compression Resistance</b>	35 tons
<b>Fixation</b>	with 4 pcs 7.5 x 80 mm buldex screw and nail



## METAL ROAD STUD

**PL-04-100**

<b>Size</b>	120 x 120 x 28 mm
<b>Material</b>	Al
<b>Weight</b>	0.4 kg
<b>Color Options</b>	Grey
<b>Lens</b>	2x2 pcs 10 mm Red / White
<b>Fixation</b>	Screw and Plug
<b>Compression Resistance</b>	35 tons



## ADJUSTABLE METAL PARKING POLE

### PL-07-500

**Product code**  
**Height**  
**Weight**  
**Material type**  
**Color Options**  
**Paint**  
**Technical Details**  
**Installation**

PL-07-500 600 mm 3.1 kg  
 2 mm iron Yellow, Red,  
 Black Electrostatic paint  
 Locked, with key, with  
 reflective 10 X 100 mm  
 trifen screw and 16 mm  
 plastic plug



## METAL DELINEATOR 45 x 8.9 cm

### PL-07-600

**Size**  
**Base Diameter**  
**Weight**  
**Paint**  
**Color**  
**Reflective**  
**Fixation**

450 x 89 mm  
 170 mm  
 3 kg  
 Electrostatic paint  
 Black  
 1 pcs Metalized Reflective Tape  
 10 x 100 mm Trifen screw and  
 16 mm Plastic plug



## TRAFFIC SAFETY MIRROR

### PL-07-350

**Material**  
**Color Options**  
**Technical Details**  
**Fixation**

ABS  
 Yellow-Black, White-Red  
 Acrylic Mirror  
 8 Special apparatus between  
 50 and 75 fixed to pole  
 Fixation to wall with screw and nail

## PRIVATE PARKING SPACE WITH REMOTE CONTROL (WITH MOBILE APPLICATION)

**PL-12-001**



Open Height  
Closed Height  
Base Size  
Weight  
Material Type  
Color Options  
Operating Voltage  
Control Distance  
Other Details

60 cm 10 cm 40 x 50 cm 8 kg Metal  
Yellow – Black 12V 50 meters It can  
be controlled by remote control and  
Android mobile software. It makes an  
audible warning during opening and  
closing. It is a rechargeable portable  
product.

## PRIVATE PARKING SPACE WITH REMOTE CONTROL (WITH MOBILE APPLICATION)

**PL-12-002**



Open Height  
Closed Height  
Base Size  
Weight  
Material Type  
Color Options  
Operating Voltage  
Control Distance  
Other Details

60 cm 10 cm 40 x 50 cm 8 kg Metal Blue -  
Black 12V 50 meters It can be controlled by  
remote control and Android mobile  
software. It makes an audible warning  
during opening and closing. It is a  
rechargeable portable product.



## BICYCLE PARKING PLACES (3 PARKING)

**PL-07-200**

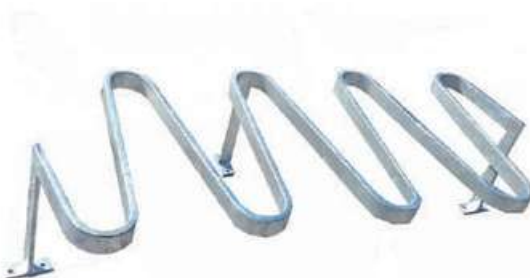
<b>Dimensions</b>	40 x 120 x 43 cm
<b>Weight</b>	16 kg
<b>Material</b>	40 x 40 brackets and 12 mm steel transmission
<b>Protection</b>	Hot-dip galvanized



## BICYCLE PARKING PLACES (5 PARKING)

**PL-07-250**

<b>Dimensions</b>	40 x 180 x 43 cm
<b>Weight</b>	25 kg
<b>Material</b>	40 x 40 brackets and 12 mm steel transmission
<b>Protection</b>	Hot-dip galvanized



## BICYCLE PARKING PLACES "Z TYPE" **PL-07-252**

<b>Dimensions</b>	145 x 65 x 36,50 cm
<b>Weight</b>	37 kg
<b>Material</b>	5 cm Folded Galvanized Metal
<b>Protection</b>	Hot-dip galvanized
<b>Parking Qty</b>	8 parking places
<b>Fixation</b>	6 pcs steel screw



**PE 50 120A**

**PLASTIC ROUND TRAFFIC SIGN**

**PE 50 111**

**PLASTIC TRIANGLE TRAFFIC SIGN**

**PE 50 110A**

**PLASTIC RECTANGULAR**

**TRAFFIC SIGN**

**PE 50 196A**

**ULTRA PLASTIC ROUND**

**TRAFFIC SIGN**



**Material  
Measures**

PPC

Plastic Round Traffic Sign

Q28 cm

Plastic Triangle Traffic Sign

H39 cm

Plastic Rectangular Traffic Sign

35x41 cm

Ultra Plastic Round Traffic Sign

Q38 cm



**DELINEATOR CONNECTION APPARATUS**

**PE 50 194 A**

**Material  
Measures**

PPC

8 cm



**CONE CONNECTION APPARATUS**

**PE 50 126 A**

**Material  
Measures**

PPC

10.5 cm



**PLASTIC CHAIN**

**PE 50 128 A**

**Material  
Measures**

PPC

25 m



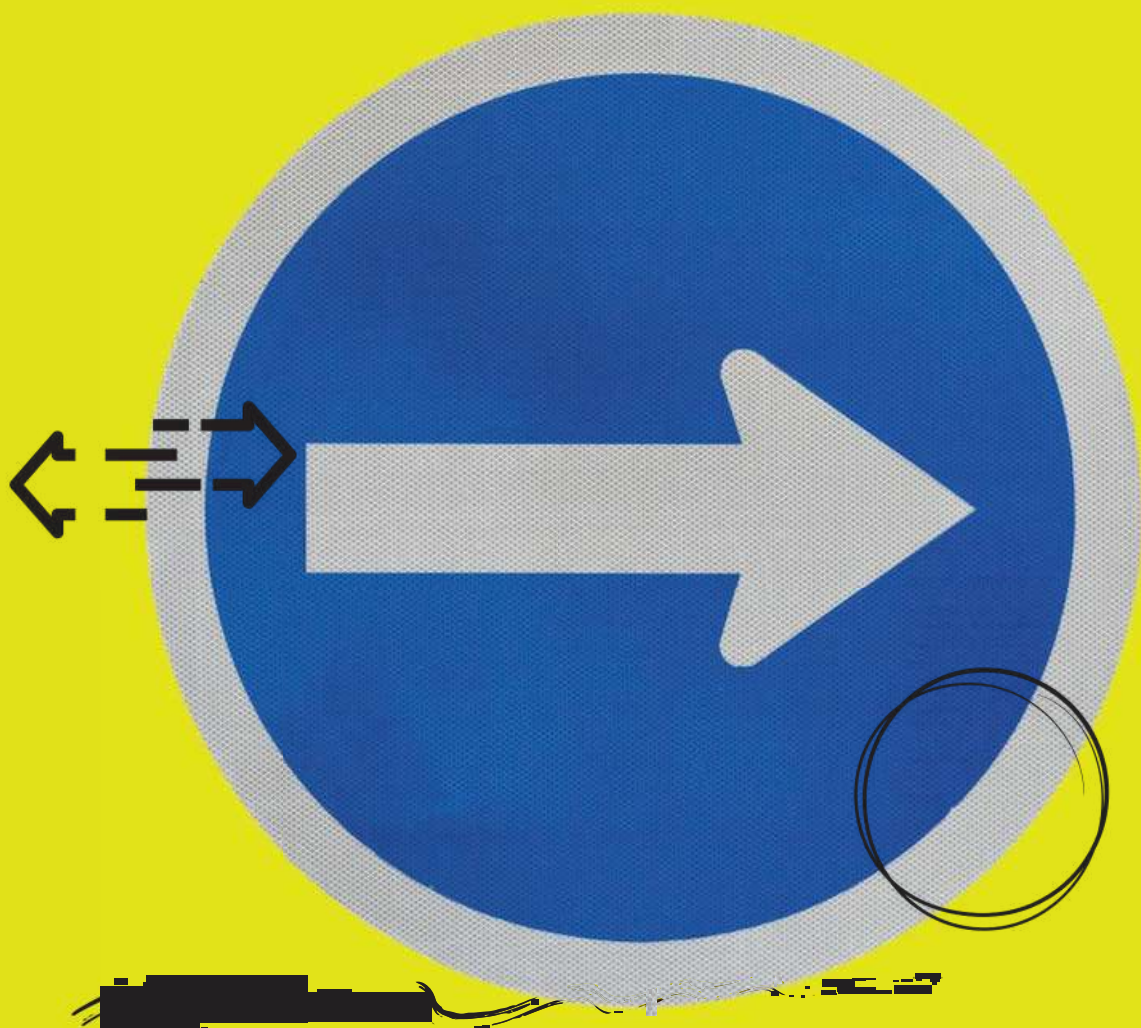
**PLASTIC CHAIN CONNECTOR**

**PE 50 174 A**

**Material  
Measures**

PPC

4 cm



# REFLECTIVE TRAFFIC SIGNS

---

Reflectra products are manufactured according to the traffic and road safety standards.

Reflective Traffic Signs: 2 mm galvanized iron (GI), Normal Performance (Type 1) or High Performance (Type 4) reflectives, Highway standards, suitable for omega poles.

**Omega Poles: Customized length and thickness, galvanized steel, corrosion resistant, suitable for traffic signs.**

Customized Traffic Signs: Different sizes (60 cm, 75 cm, 90 cm, etc.), folded or plain, with rail or **without rail, lambri type or not, aluminium or galvanized iron.**



**PAK GERMAN  
ENGINEERS**

## NORMAL PERFORMANCE TRAFFIC SIGNS



## NORMAL PERFORMANCE REFLECTIVE MATERIAL STRUCTURE

<b>Sizes</b>	Standard
<b>Sign Board</b>	2 mm Galvanised Metal Sheet
<b>Reflective</b>	(Type I) Engineering Grade
<b>Fixation</b>	Applicable to Omega Pole

### Product Type and Codes

<b>PG-01-01-0060</b>	Circle Traffic Sign Board (60 cm) Square
<b>PG-01-01-6060</b>	Traffic Sign Board (60 × 60 cm) Triangle
<b>PG-01-01-0U90</b>	Traffic Sign Board (90 cm) Triangle Traffic
<b>PG-01-01-0U75</b>	Sign Board (75 cm) Rectangle Traffic Sign
<b>PG-01-01-5075</b>	Board (50 × 75 cm) Octangle Traffic Sign
<b>PG-01-01-0S60</b>	Board (60 cm) Octangle Traffic Sign Board
<b>PG-01-01-0S75</b>	(75 cm) Rectangle Traffic Sign Board (30 ×
<b>PG-01-01-30100</b>	100 cm)

# HIGH PERFORMANCE TRAFFIC SIGNS



## HIGH PERFORMANCE REFLECTIVE MATERIAL STRUCTURE

<b>Sizes</b>	Standard
<b>Sign Board</b>	2mm Galvanised Metal Sheet
<b>Reflective</b>	High-Intensity Grade (Type 4)
<b>Fixation</b>	Applicable to Omega Pole

### Product Type and Code

<b>PG-02-01-0060</b>	Circle Traffic Sign Board (60 cm) Square
<b>PG-02-01-6060</b>	Traffic Sign Board (60 × 60 cm) Triangle
<b>PG-02-01-0U90</b>	Traffic Sign Board (90 cm) Triangle Traffic
<b>PG-02-01-0U75</b>	Sign Board (75 cm) Rectangle Traffic Sign
<b>PG-02-01-5075</b>	Board (50 × 75 cm) Octangle Traffic Sign
<b>PG-02-01-0S60</b>	Board (60 cm) Octangle Traffic Sign Board
<b>PG-02-01-0S75</b>	(75 cm) Rectangle Traffic Sign Board (30 ×
<b>PG-02-01-30100</b>	100 cm)



## Q 60 cm PLASTIC ROUND TRAFFIC SIGN

### PG-20-021

**Dimension Weight**  
**Material Production**  
**Method Color**  
**Installation Traffic**  
**Sign Type**

600 x 600 x 20 mm  
 1.75 Kg  
 %100 PC (Polycarbonate)  
 Plastic Injection  
 Black (Resistant to UV rays)  
 Adaptable to omega poles or pipe type traffic poles  
 Folded and with rail



## 60 x 60 cm PLASTIC SQUARE TRAFFIC SIGN

### PG-20-011

**Dimension**  
**Weight**  
**Material**  
**Production Method**  
**Color**  
**Installation**  
**Traffic Sign Type**

600 x 600 x 20 mm  
 2.15 Kg  
 %100 PC (Polycarbonate)  
 Plastic Injection  
 Black (Resistant to UV rays)  
 Adaptable to omega poles or  
 pipe type traffic poles  
 Folded and with rail



## 90 x 90 x 90 cm PLASTIC TRIANGLE TRAFFIC SIGN

### PG-20-011

**Dimension Weight**  
**Material Production**  
**Method Color Installation**  
**Traffic Sign Type**

900 x 900 x 900 x 20 mm  
 2.15 Kg  
 %100 PC (Polycarbonate)  
 Plastic Injection  
 Black (Resistant to UV rays)  
 Adaptable to omega poles or pipe type traffic poles  
 Folded and with rail



Material	Hole Diameter	Hole Interspace	RF-01-100	RF-01-200	RF-01-300
0.005	0.005	0.005	0.005	0.005	0.005
0.010	0.010	0.010	0.010	0.010	0.010
0.020	0.020	0.020	0.020	0.020	0.020
0.040	0.040	0.040	0.040	0.040	0.040
0.080	0.080	0.080	0.080	0.080	0.080
0.160	0.160	0.160	0.160	0.160	0.160
0.320	0.320	0.320	0.320	0.320	0.320
0.640	0.640	0.640	0.640	0.640	0.640
1.280	1.280	1.280	1.280	1.280	1.280
2.560	2.560	2.560	2.560	2.560	2.560
5.120	5.120	5.120	5.120	5.120	5.120
10.240	10.240	10.240	10.240	10.240	10.240
20.480	20.480	20.480	20.480	20.480	20.480
40.960	40.960	40.960	40.960	40.960	40.960
81.920	81.920	81.920	81.920	81.920	81.920
163.840	163.840	163.840	163.840	163.840	163.840
327.680	327.680	327.680	327.680	327.680	327.680
655.360	655.360	655.360	655.360	655.360	655.360
1310.720	1310.720	1310.720	1310.720	1310.720	1310.720
2621.440	2621.440	2621.440	2621.440	2621.440	2621.440
5242.880	5242.880	5242.880	5242.880	5242.880	5242.880
10485.760	10485.760	10485.760	10485.760	10485.760	10485.760
20971.520	20971.520	20971.520	20971.520	20971.520	20971.520
41943.040	41943.040	41943.040	41943.040	41943.040	41943.040
83886.080	83886.080	83886.080	83886.080	83886.080	83886.080
167772.160	167772.160	167772.160	167772.160	167772.160	167772.160
335544.320	335544.320	335544.320	335544.320	335544.320	335544.320
671088.640	671088.640	671088.640	671088.640	671088.640	671088.640
1342177.280	1342177.280	1342177.280	1342177.280	1342177.280	1342177.280
2684354.560	2684354.560	2684354.560	2684354.560	2684354.560	2684354.560
5368709.120	5368709.120	5368709.120	5368709.120	5368709.120	5368709.120
10737418.240	10737418.240	10737418.240	10737418.240	10737418.240	10737418.240
21474836.480	21474836.480	21474836.480	21474836.480	21474836.480	21474836.480
42949672.960	42949672.960	42949672.960	42949672.960	42949672.960	42949672.960
85899345.920	85899345.920	85899345.920	85899345.920	85899345.920	85899345.920
171798691.840	171798691.840	171798691.840	171798691.840	171798691.840	171798691.840
343597383.680	343597383.680	343597383.680	343597383.680	343597383.680	343597383.680
687194767.360	687194767.360	687194767.360	687194767.360	687194767.360	687194767.360
1374389534.720	1374389534.720	1374389534.720	1374389534.720	1374389534.720	1374389534.720
2748779069.440	2748779069.440	2748779069.440	2748779069.440	2748779069.440	2748779069.440
5497558138.880	5497558138.880	5497558138.880	5497558138.880	5497558138.880	5497558138.880
10995116277.760	10995116277.760	10995116277.760	10995116277.760	10995116277.760	10995116277.760

Galvanised Omega Profile 10 mm (+/- % 10) 20 mm (+/- % 10) 2,5 mt length – 3 mm diameter 3 mt length – 3 mm diameter 3 mt length – 4 mm diameter



Any size  
Folded or unfolded  
Aluminium or galvanized bended or unbended sheet  
Panalled or plain type  
With railed or without



**RAILGUARD  
REFLECTOR  
PG-70-003**

Size  
Mounting Place Size  
Sign Board  
Reflective  
Weight

140 x 95 x 50 mm  
50 x 50 mm  
2 mm Galvanised Metal Sheet  
Prismatic Type-4 / White – Red Reflective  
160 g

## DOUBLE BENDED / FOLDED TRAFFIC SIGNS

<b>Sizes</b>	Standard
<b>Signs</b>	1,5 mm Bended and Railed Galvanized Sheet
<b>Reflective Sheet</b>	High Performance / Normal Performance
<b>Fixation</b>	Double Fixation Rails and suitable with clamps to the pipe type poles

### Product Types and Codes

#### Normal Performance **RF-01-01-**

##### **5075CB**

<b>PG-01-01-6060CB</b>	Rectangle Traffic Sign (50 x 75 cm)
<b>PG-01-01-0060CB</b>	Square Traffic Sign (60 x 60 cm)
<b>PG-01-01-0S75CB</b>	Circle Traffic Sign (60 cm)
<b>PG-01-01-0U75CB</b>	Octagonal Traffic Sign (75 cm)
	Triangle Traffic Sign (75 cm)

#### High Performance

<b>PG-02-01-5075CB</b>	Rectangle Traffic Sign (50 x 75 cm)
<b>PG-02-01-6060CB</b>	Square Traffic Sign (60 x 60 cm)
<b>PG-02-01-0060CB</b>	Circle Traffic Sign (60 cm)
<b>PG-02-01-0S75CB</b>	Octagonal Traffic Sign (75 cm)
<b>PG-02-01-0U75CB</b>	Triangle Traffic Sign (75 cm)



# SINGLE BENDED / FOLDED TRAFFIC SIGNS

Solar Studs

## Sizes

## Signs

## Reflective Sheet

## Fixation

Standard

1,5 mm Bended and Railed Galvanized Sheet

High Performance / Normal Performance

clamps to the pipe type poles

Double Fixation Rails and suitable with



## Product Types and Codes

### Normal Performance

**PG-01-02-5075TB**

Rectangle Traffic Sign (50 x 75 cm)

**PG-01-02-6060TB**

Square Traffic Sign (60 x 60 cm)

**PG-01-02-0060TB**

Circle Traffic Sign (60 cm)

**PG-01-02-0S75TB**

Octagonal Traffic Sign (75 cm)

**PG-01-02-0U75TB**

Triangle Traffic Sign (75 cm)

### High Performance

**PG-02-02-5075TB**

Rectangle Traffic Sign (50 x 75 cm)

**PG-02-02-6060TB**

Square Traffic Sign (60 x 60 cm)

**PG-02-02-0060TB**

Circle Traffic Sign (60 cm)

**PG-02-02-0S75TB**

Octagonal Traffic Sign (75 cm)

**PG-02-02-0U75TB**

Triangle Traffic Sign (75 cm)





*from to all over Pakistan*  
**0300-111-8-999**



**Address** Plote 505-E Bhalla road,  
: near bhalla chowk, Block-E  
Johar Town Lahore, Punjab

**Phone** 0300-111-8-999  
0321-5370486

**Mail** [info@pgepakistan.com](mailto:info@pgepakistan.com)

**website** [www.pgepakistan.com](http://www.pgepakistan.com)

### **Islamabad office**

Plaza 148, 2<sup>nd</sup> floor, Civic  
Center, Bahria Town Phase 4  
block D, Rawalpindi / Islamabad